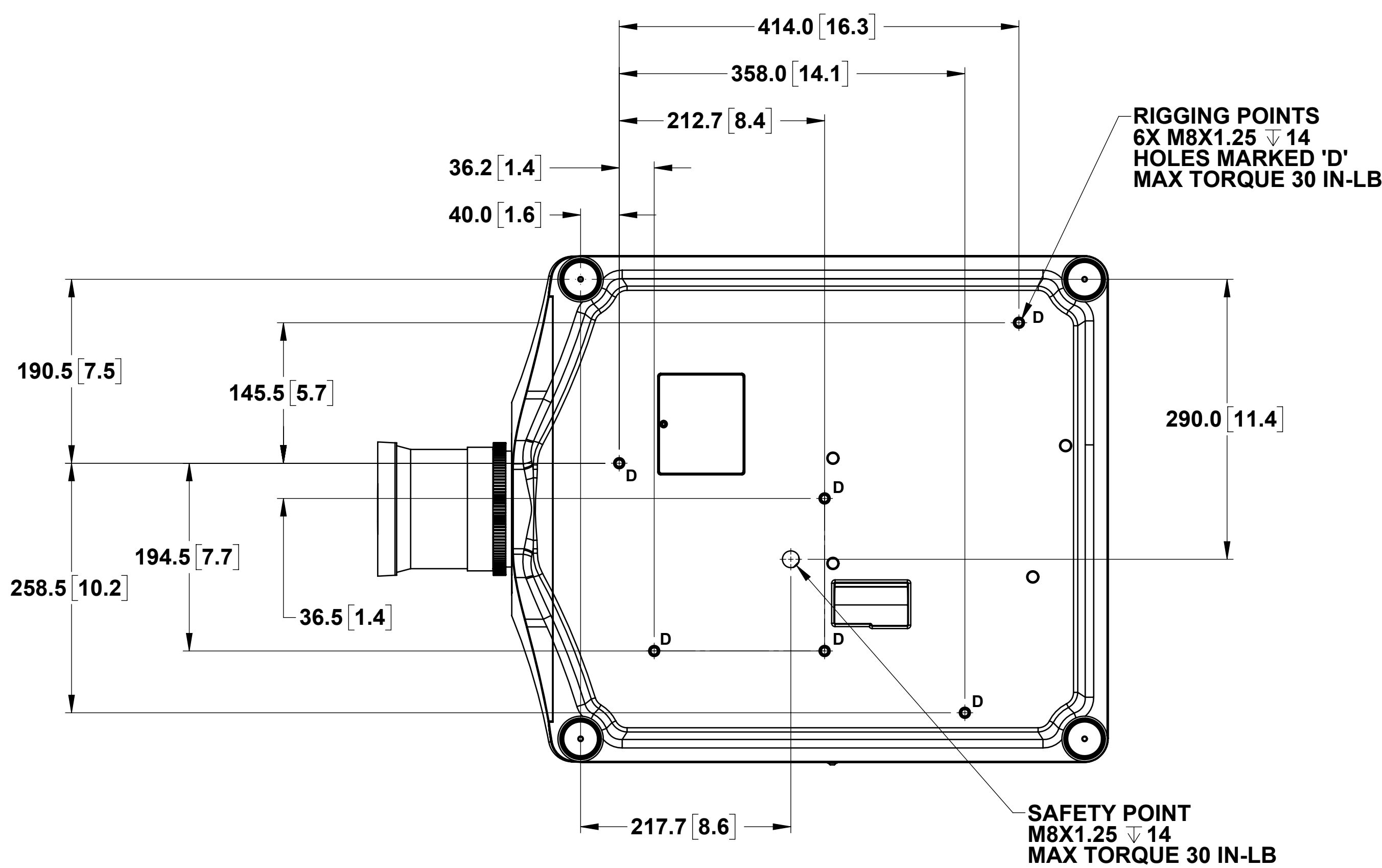
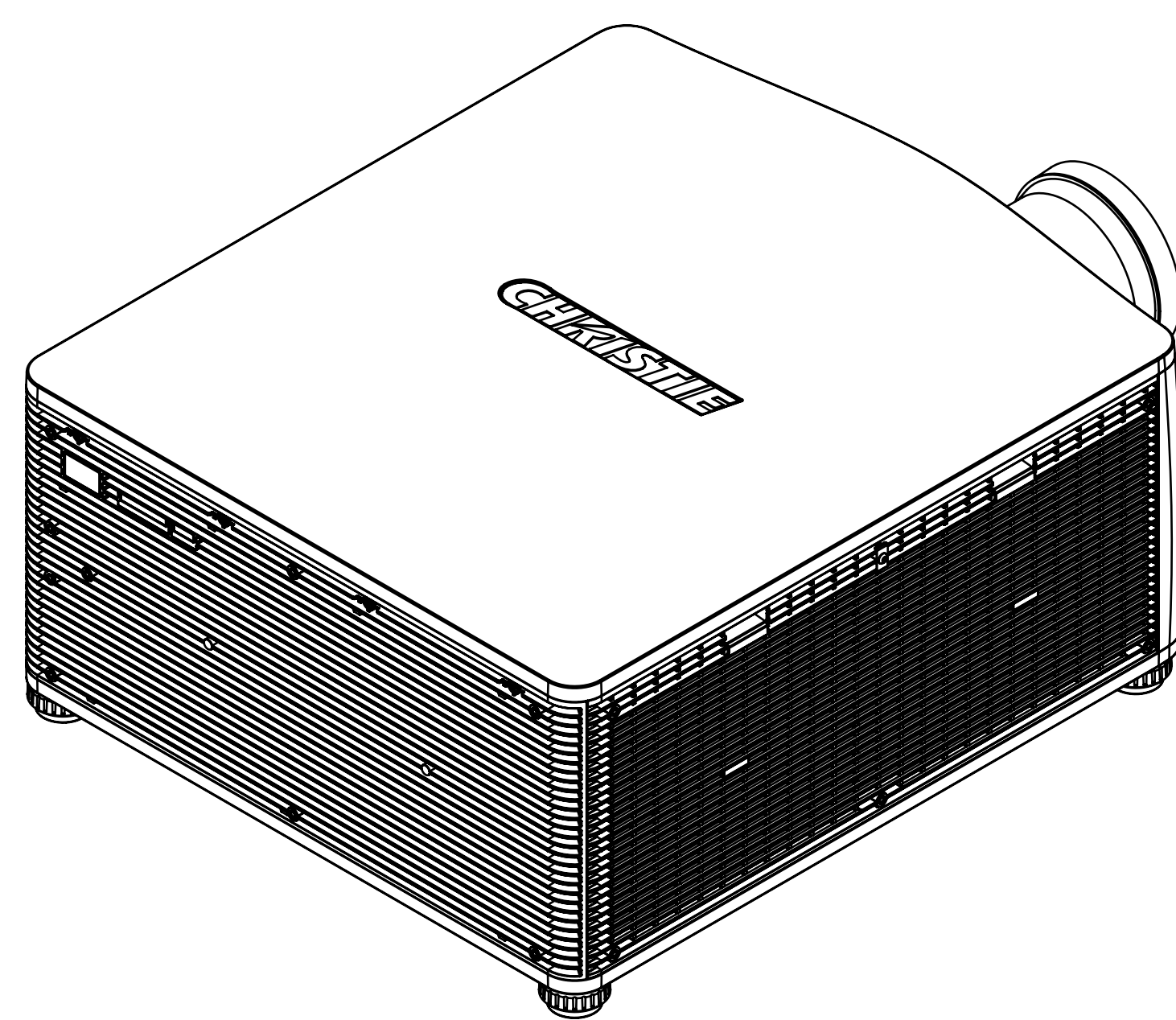
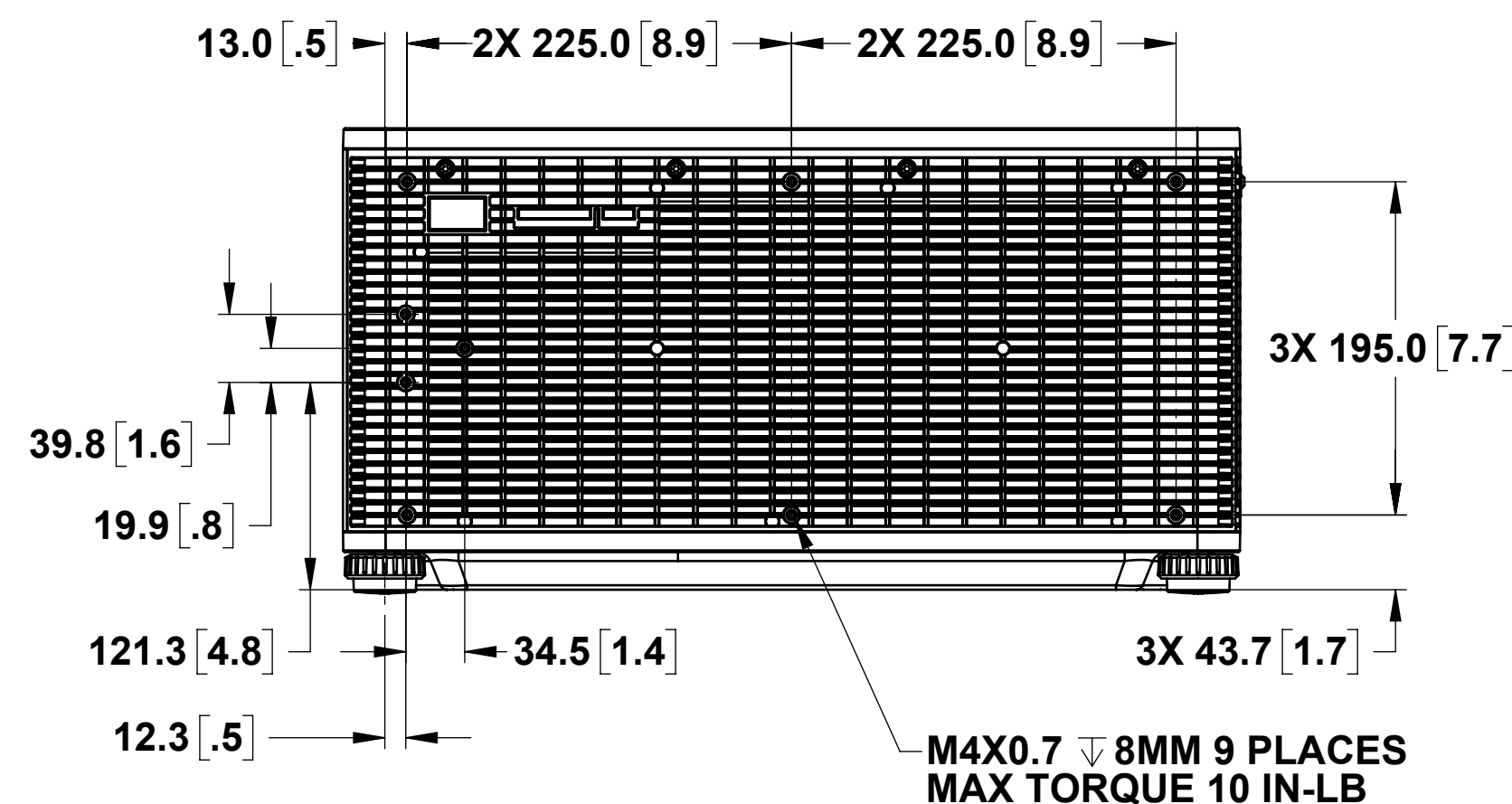
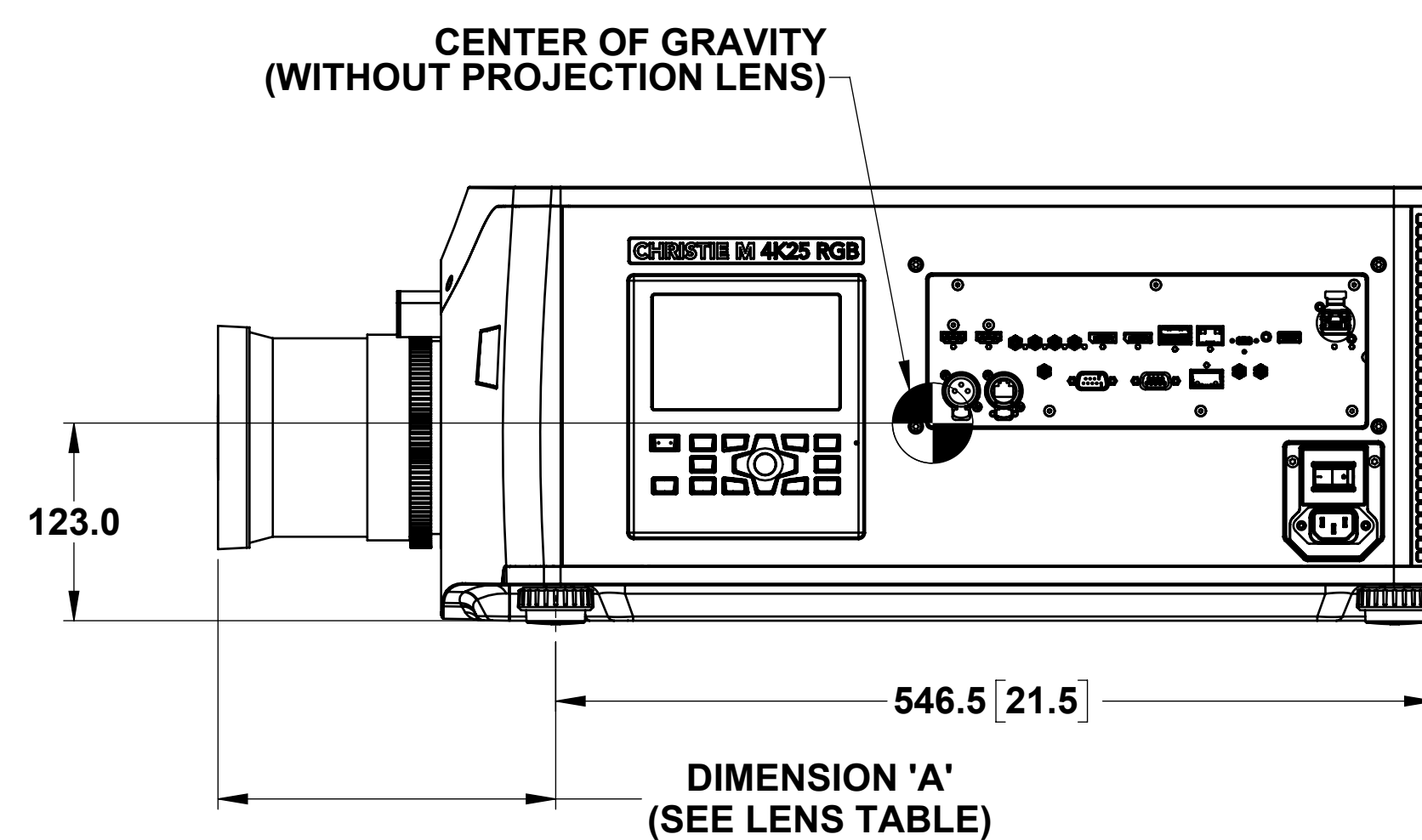
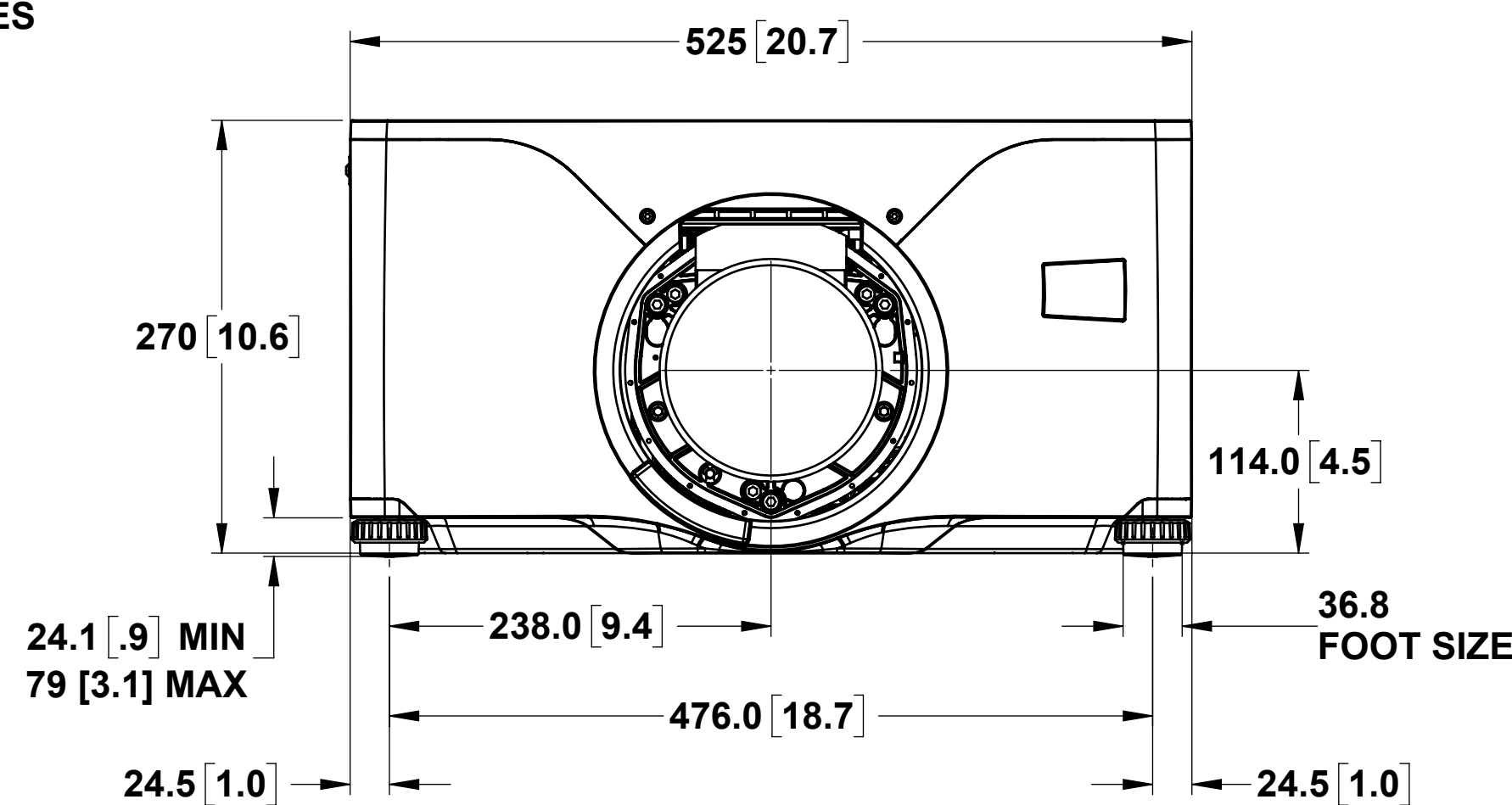
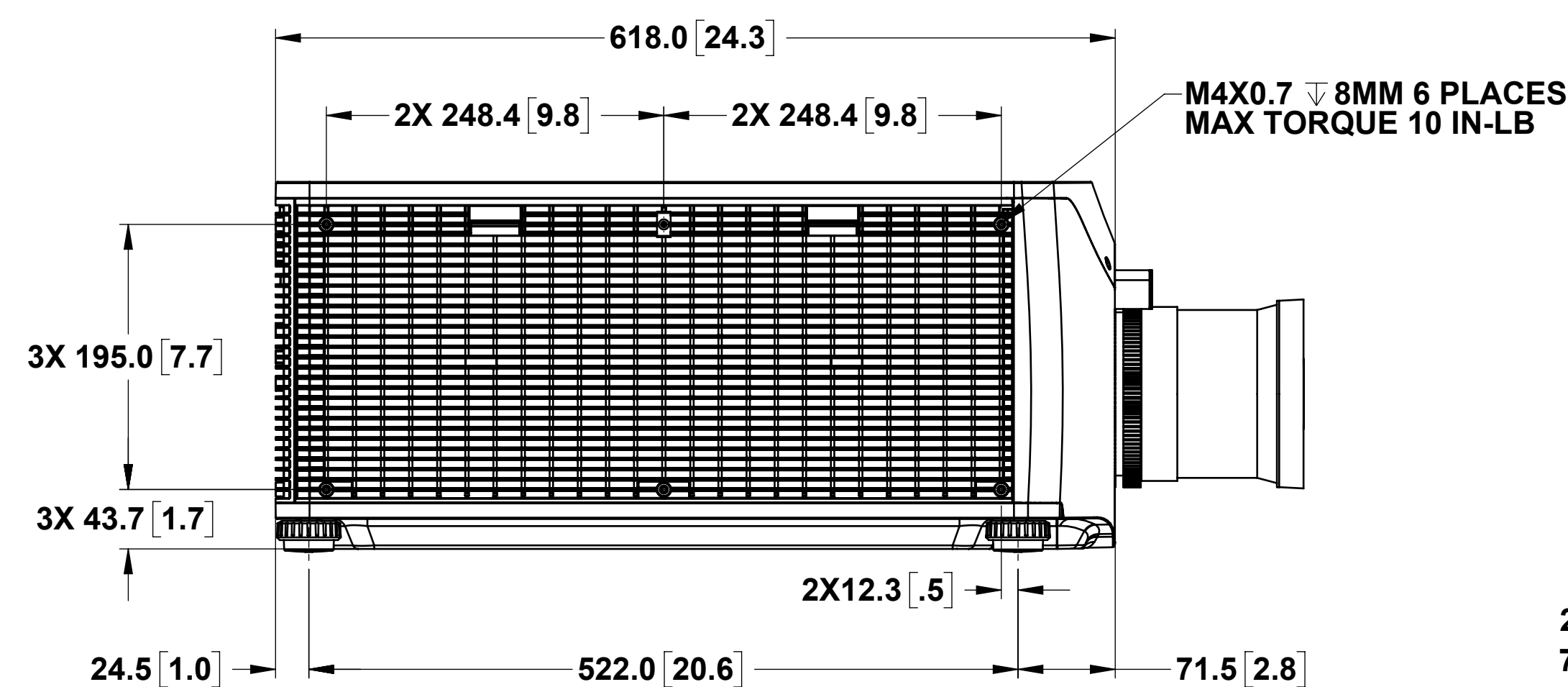
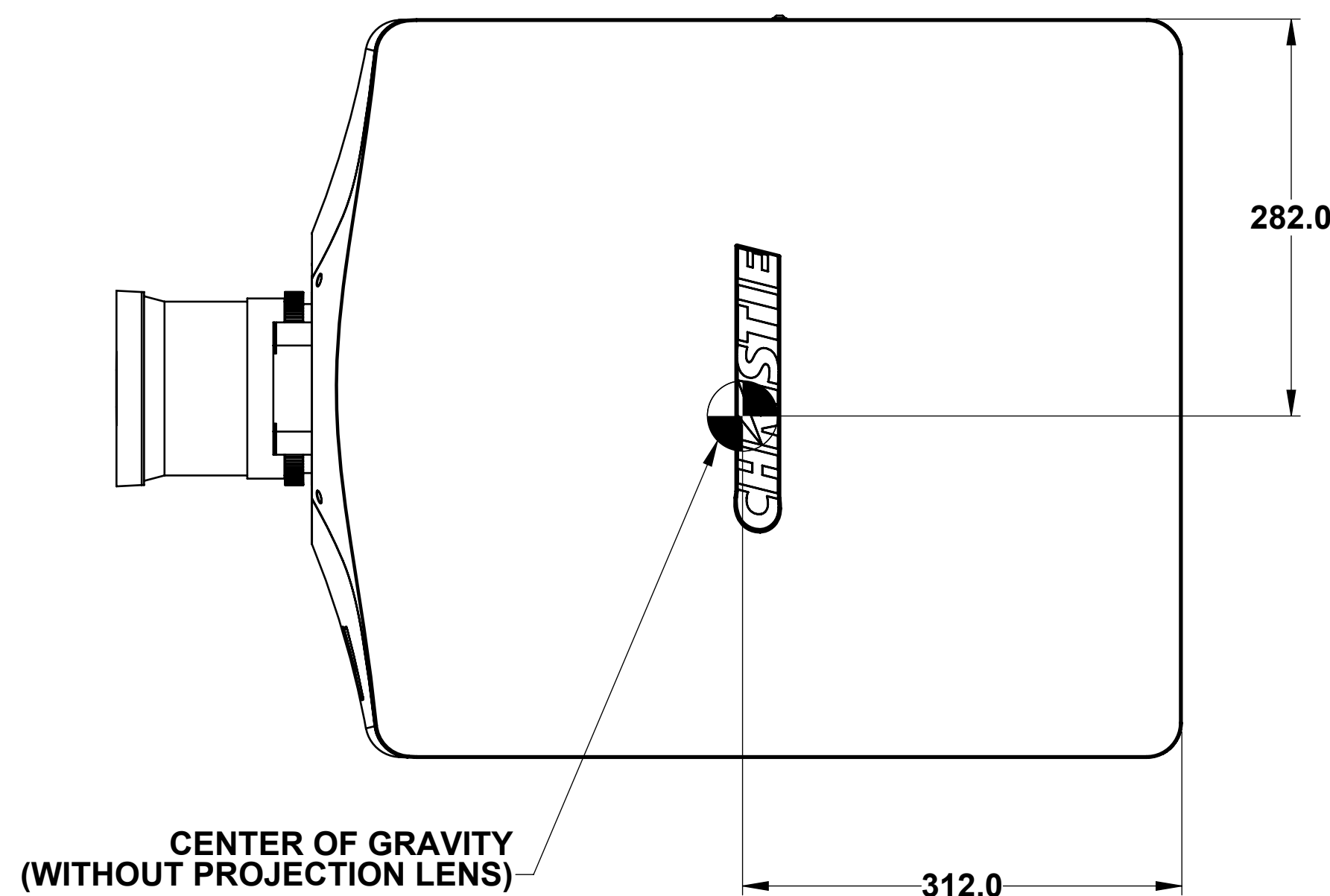
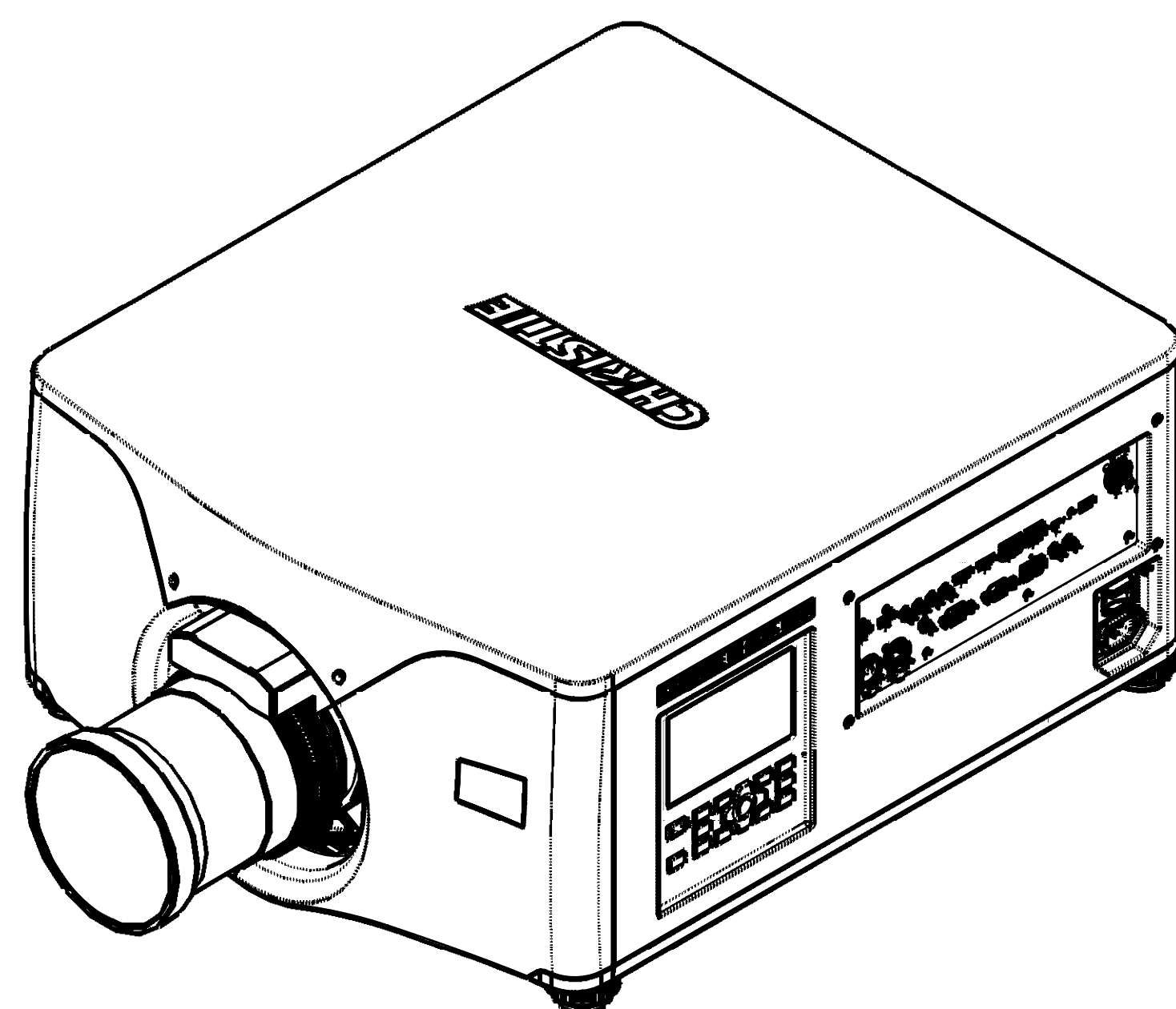


REVISION HISTORY OF: 020-103552-01			
REV	DESCRIPTION OF CHANGE	BY	REV DATE
01	INITIAL RELEASE UPDATED CROWDING, CORRECTED ADJUSTMENT RANGES OF THE STACKING FRAME, ADDED CEILING MOUNT SHEET WITH ADJUSTMENT RANGES SHOWN, ADDED TORQUE SPECS FOR BOTTOM RIGGING POINTS AND SAFETY POINT, LONG THROW LENSES SHOWN WITH LENS HOODS INSTALLED TO INDICATE TABLE LENGTHS, ADDED WU/UHD+ RESOLUTIONS ON THE LENS TABLE	JM	06/11/2021 09/01/2022

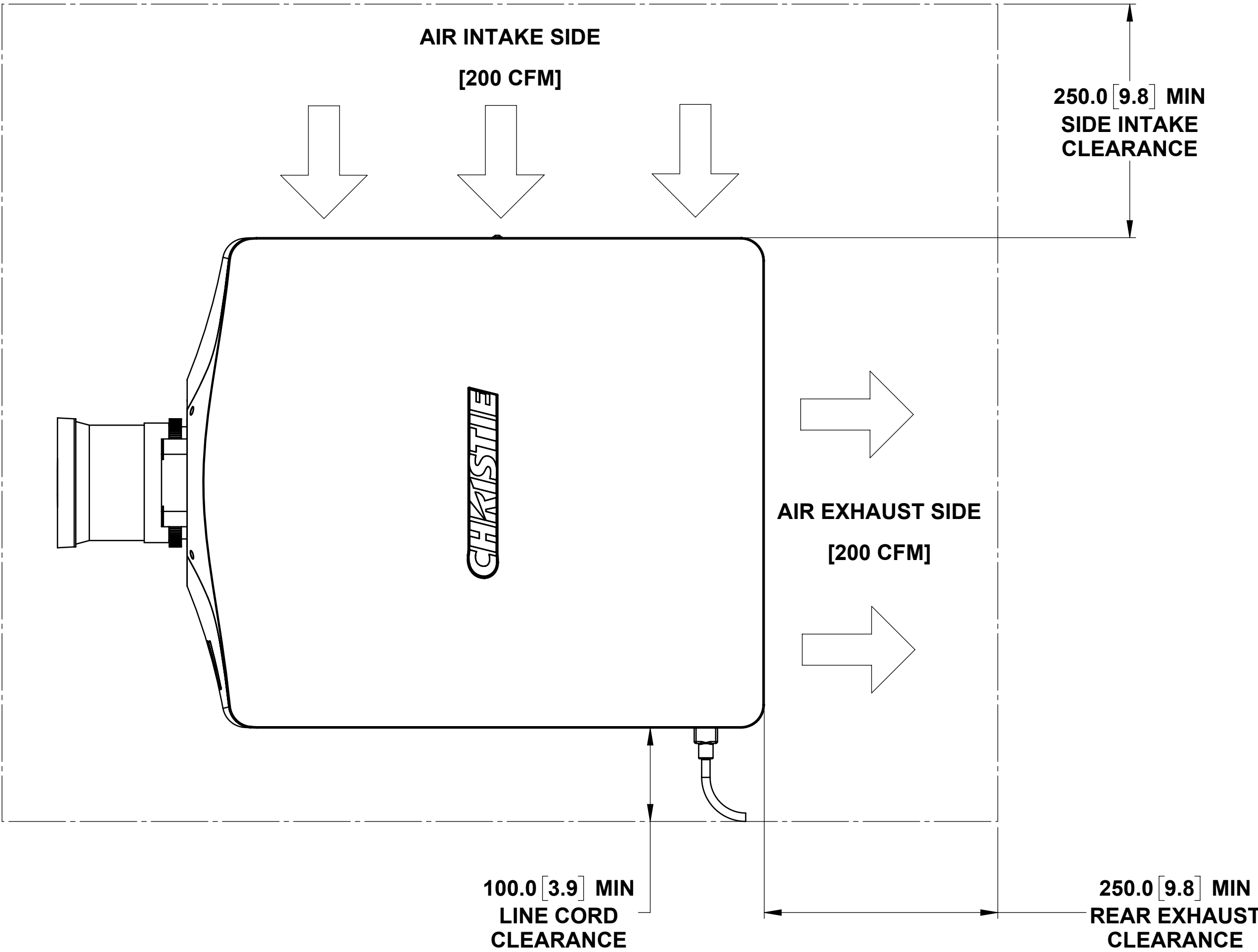


GENERAL NOTES:

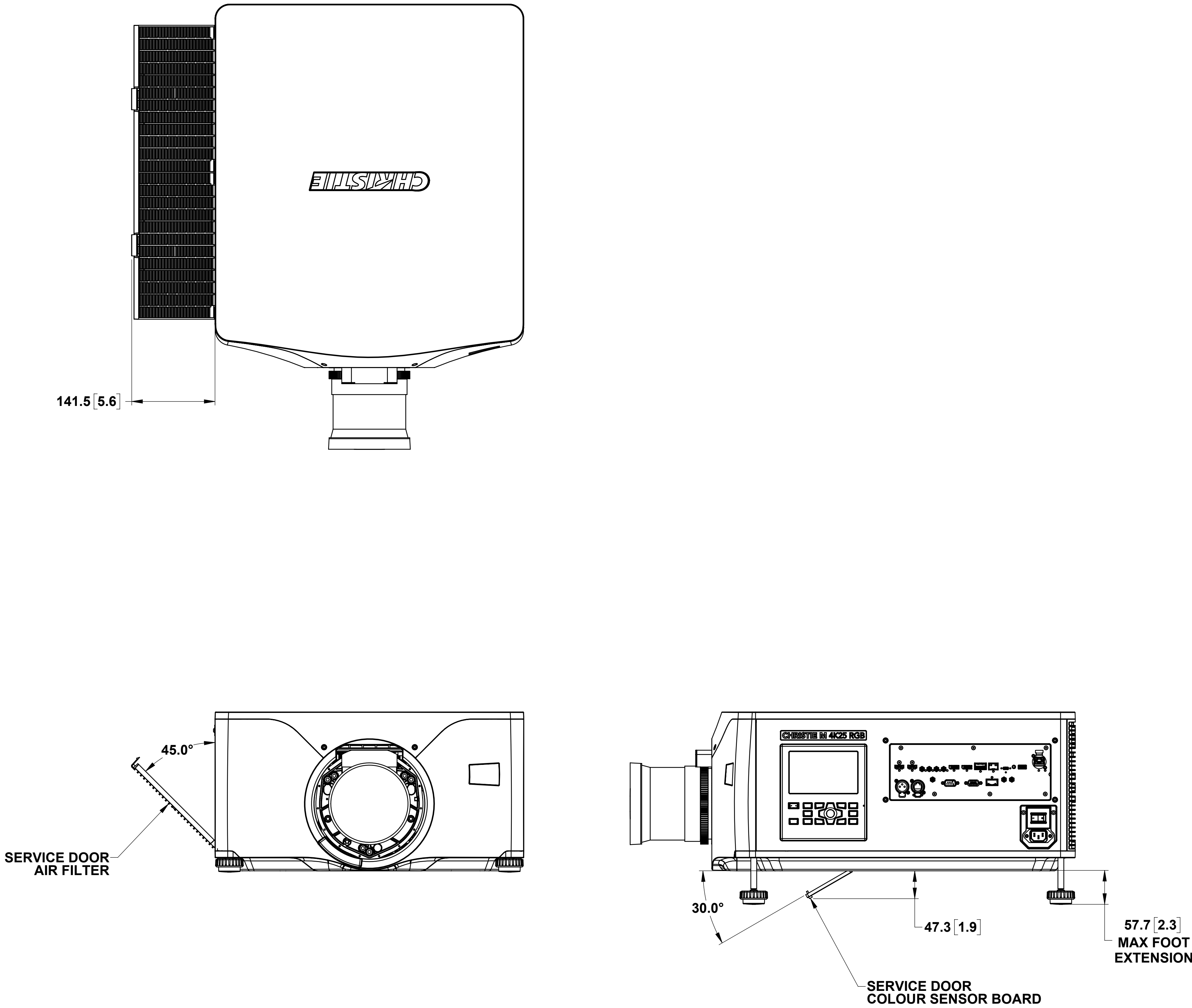
1. APPROX. MASS:42kg [92.5 LB], WITHOUT LENS
2. OPERATING CONDITIONS:
 1. AMBIENT AIR TEMPERATURE: 5°C (41°F) TO 40°C (104°F) MAX UP TO 300m (~1,000FT)
 2. ALTITUDE: 0-3000m (10,000FT)
 3. RELATIVE HUMIDITY (NON-CONDENSING): 10%-80%
3. ROOM HEAT LOAD: 1800 W (6,140 BTU/h) MAX
4. POWER REQUIREMENTS:
 1. BRIGHTNESS LIMITED MODE: SINGLE PHASE 100-120VAC 50/60Hz, 12A, A CERTIFIED BREAKER IS REQUIRED AS PART OF THE INSTALLATION
 2. NORMAL OPERATION MODE: SINGLE PHASE 200-240 VAC 50/60Hz, 9A, A CERTIFIED BREAKER IS REQUIRED AS PART OF THE INSTALLATION
 3. POWER CONSUMPTION IS 1.8kW MAX
5. SEE SHEET 2 FOR MINIMUM CLEARANCE FOR AIRFLOW
6. SEE SHEET 2 FOR FOR MAINTENANCE ACCESS POINTS

LENS TABLE (SEE SHEET 4 FOR MORE DETAILS)				
PROJECTION LENS		CDS PART NUMBER	DIMENSION 'A' MM (IN)	LENS WEIGHT KG (LBS)
FIXED - HIGH BRIGHTNESS				
HD/UHD/WU/UHD+				
0.37:1		118-113106-XX	329 (13.0)	8.0 (17.6)
0.67:1		118-100110-XX	255 (10.0)	5.6 (12.3)
1.1:1		118-100117-XX	319 (12.6)	6.2 (13.7)
ZOOM - HIGH BRIGHTNESS				
HD/UHD/WU/UHD+				
0.8-1.16:1		118-130105-XX	350 (13.8)	11.2 (24.7)
1.16-1.49:1		118-100111-XX	277 (10.9)	6.3 (13.9)
1.4-1.8:1		118-100112-XX	245 (9.6)	6.0 (13.3)
1.8-2.6:1		118-100113-XX	210 (8.3)	5.0 (11.0)
2.6-4.1:1		118-100114-XX	196 (7.7)	5.2 (11.4)
4.1-6.9:1 *		118-100115-XX *	327 (12.9) *	3.8 (8.3)
6.9-10.4:1 *		118-100116-XX *	612 (24.1) *	5.3 (11.7)
* Requires a lens hood extension to use with this product. Dimension 'A' length includes lens hood. The 4.1-6.9:1 zoom lens requires a 185 mm lens hood extension (P/N: 163-168106-XX). The 6.9-10.4:1 zoom lens requires a 410 mm lens hood extension (P/N: 163-167105-XX).				
ZOOM - ULTRA HIGH CONTRAST				
HD/UHD/WU/UHD+	2K			
1.28-1.87:1	1.2-1.75:1	163-165103-XX	257 (10.1)	5.5 (12.1)
1.48-2.03:1	1.39-1.9:1	163-152109-XX	287 (11.3)	5.9 (13.0)
1.6-2.35:1	1.5-2.2:1	163-166104-XX	288 (11.3)	5.9 (13.0)
1.87-2.56:1	1.75-2.4:1	163-153100-XX	209 (8.2)	5.2 (11.5)

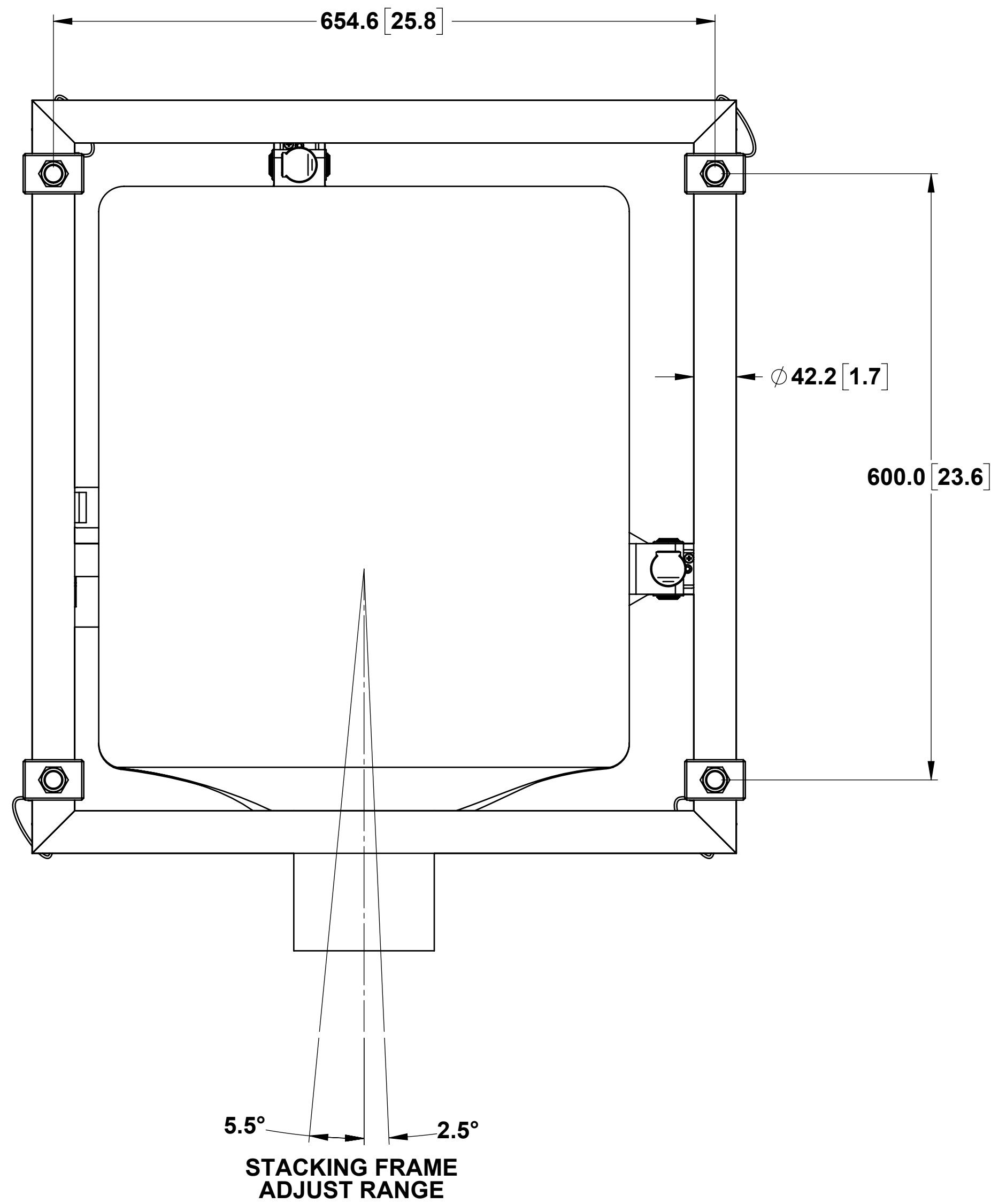
MINIMUM CLEARANCES



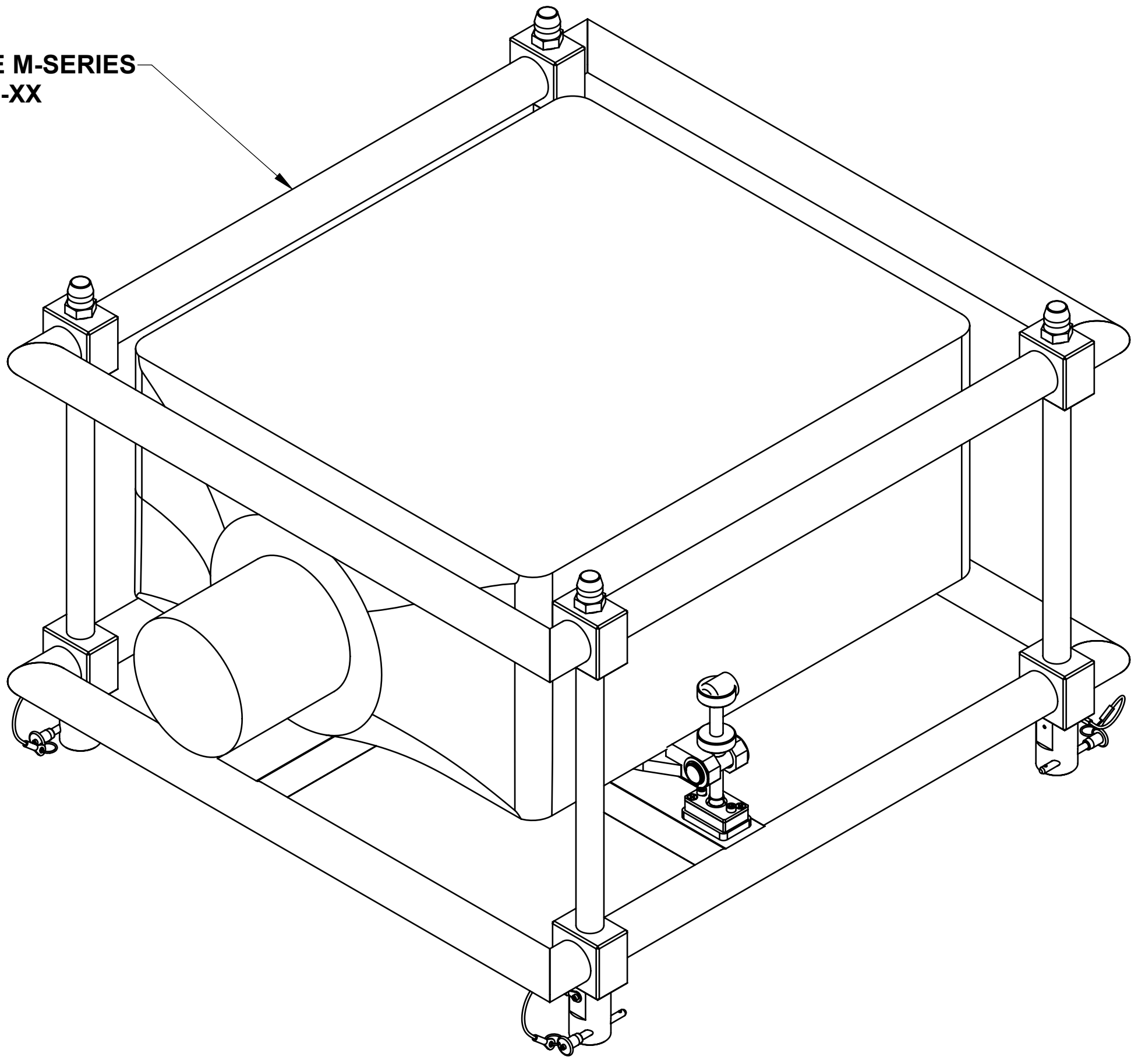
MAINTENANCE ACCESS



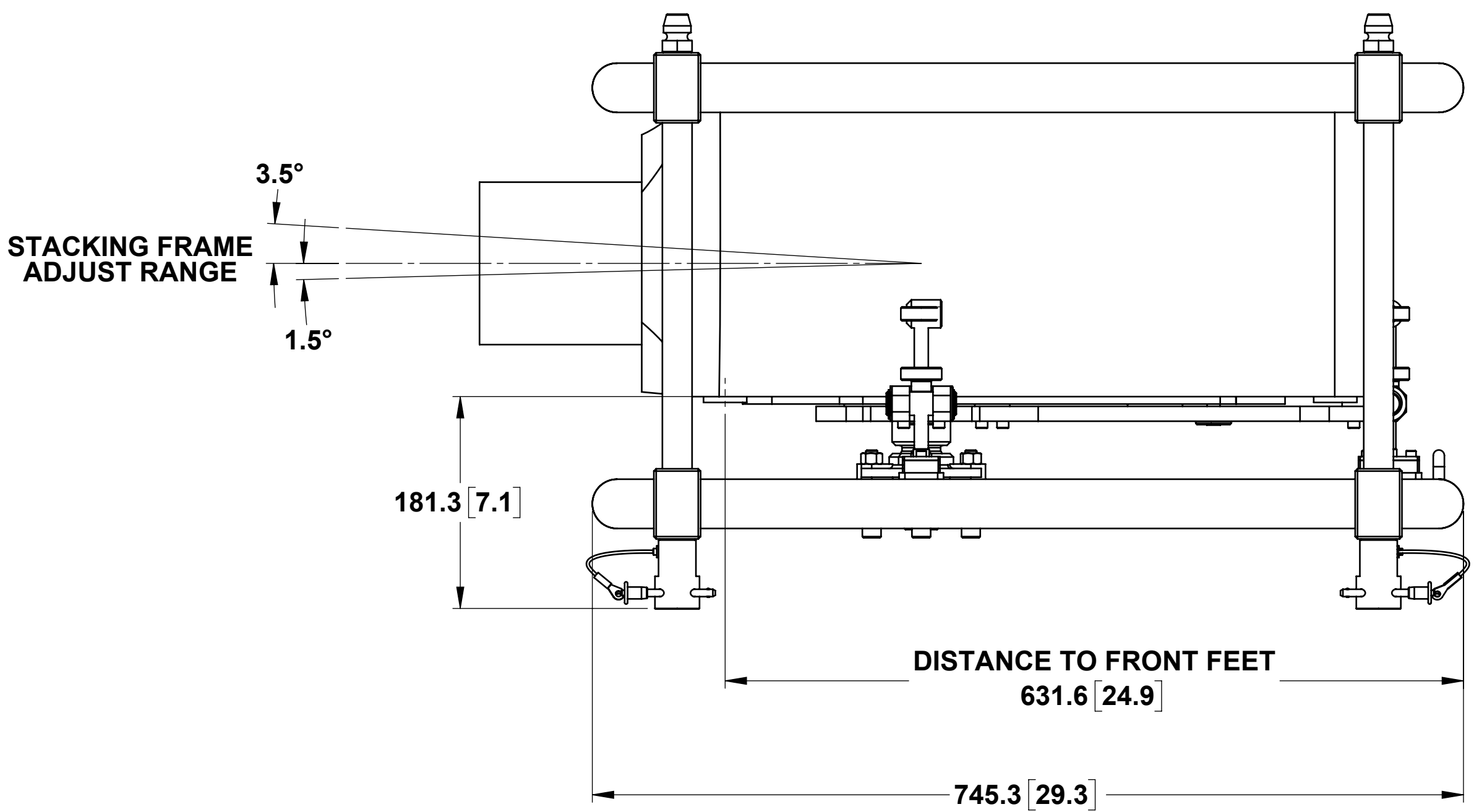
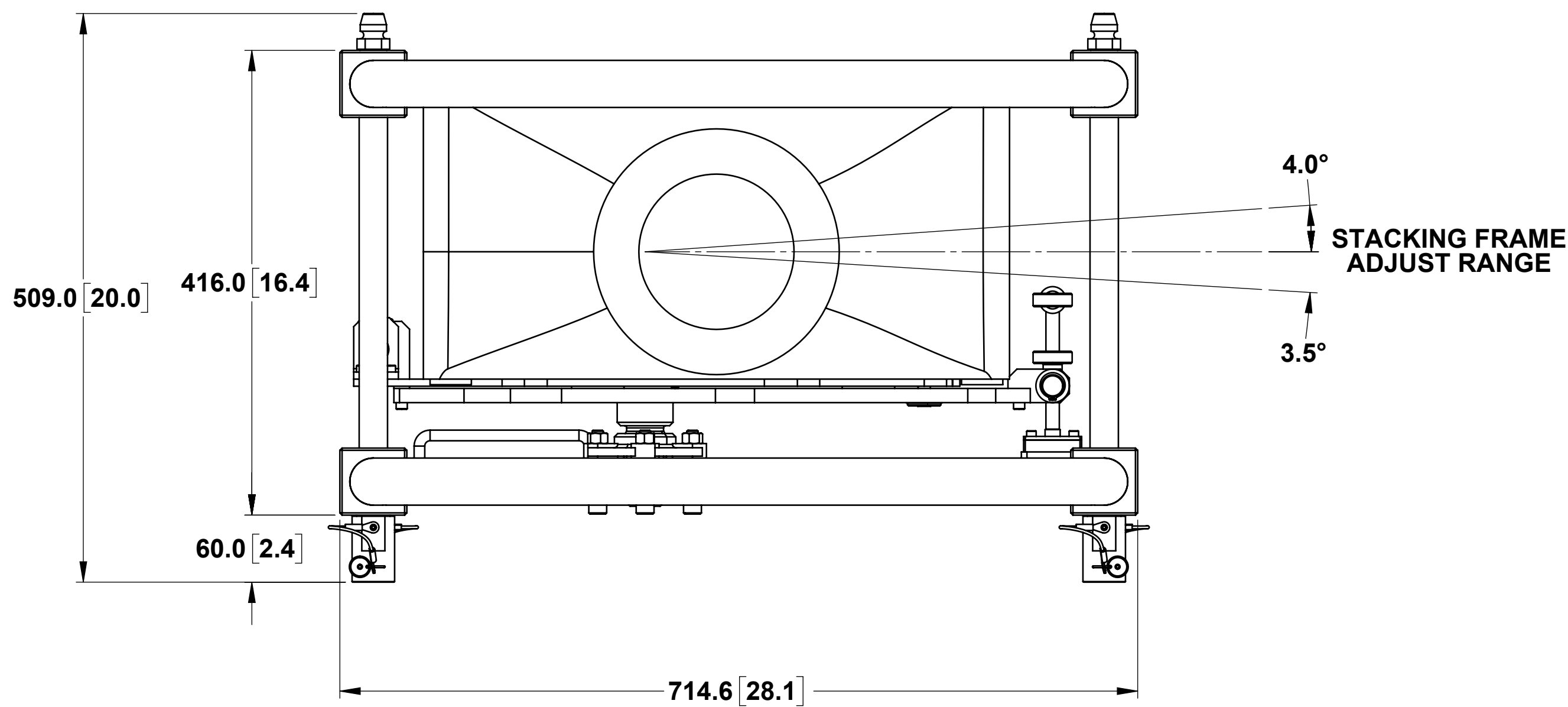
NOTES:
1. SIMPLIFIED PROJECTOR MODEL SHOWN IN ALL VIEWS



STACKING FRAME M-SERIES
118-100107-XX



NOTE: REFER TO SHEET #1 FOR MAX TORQUE VALUES
WHEN SECURING PROJECTOR TO STACKING FRAME



PROPRIETARY
NOT TO BE DISCLOSED OR REPRODUCED IN
ANY MANNER WITHOUT THE EXPRESS WRITTEN
PERMISSION OF CHRESTE DIGITAL SYSTEMS
USA, INC. OR ITS AFFILIATES LISTED ON
www.chrestedigital.com

CHRESTIE®

SIZE
E

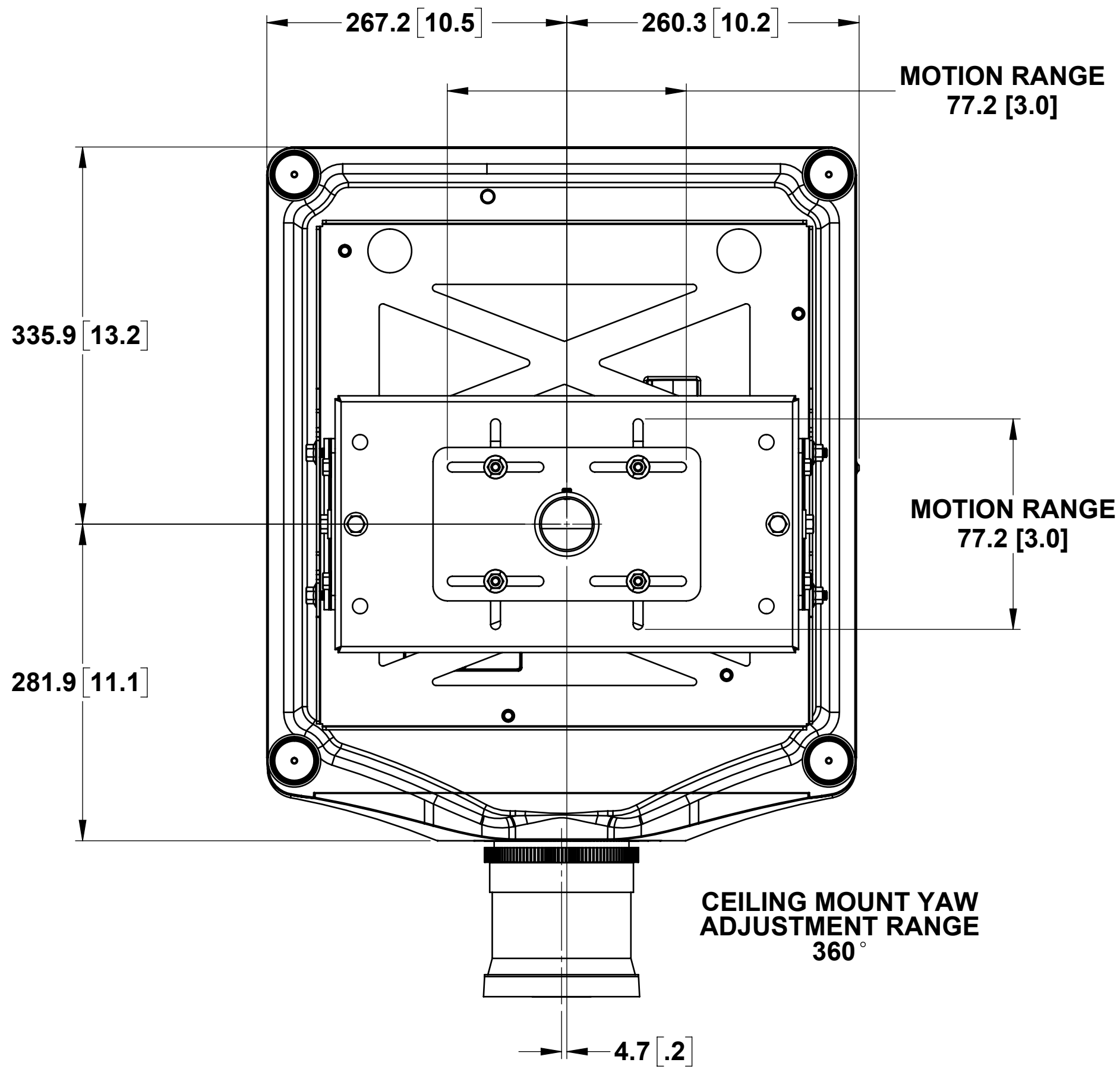
PART NUMBER

020-103552-01 02

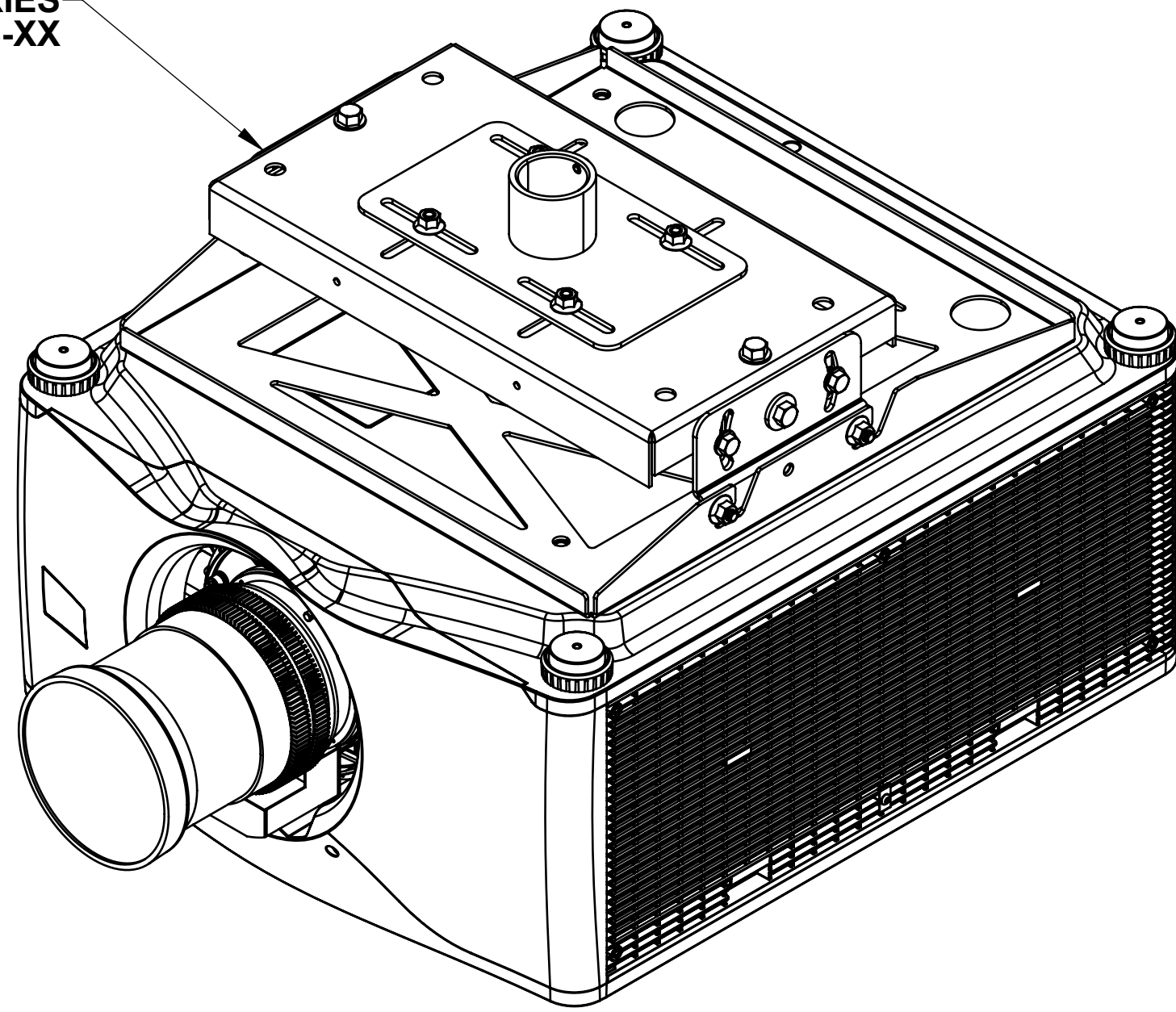
SCALE
1:4

MASS
- LBS [KG]

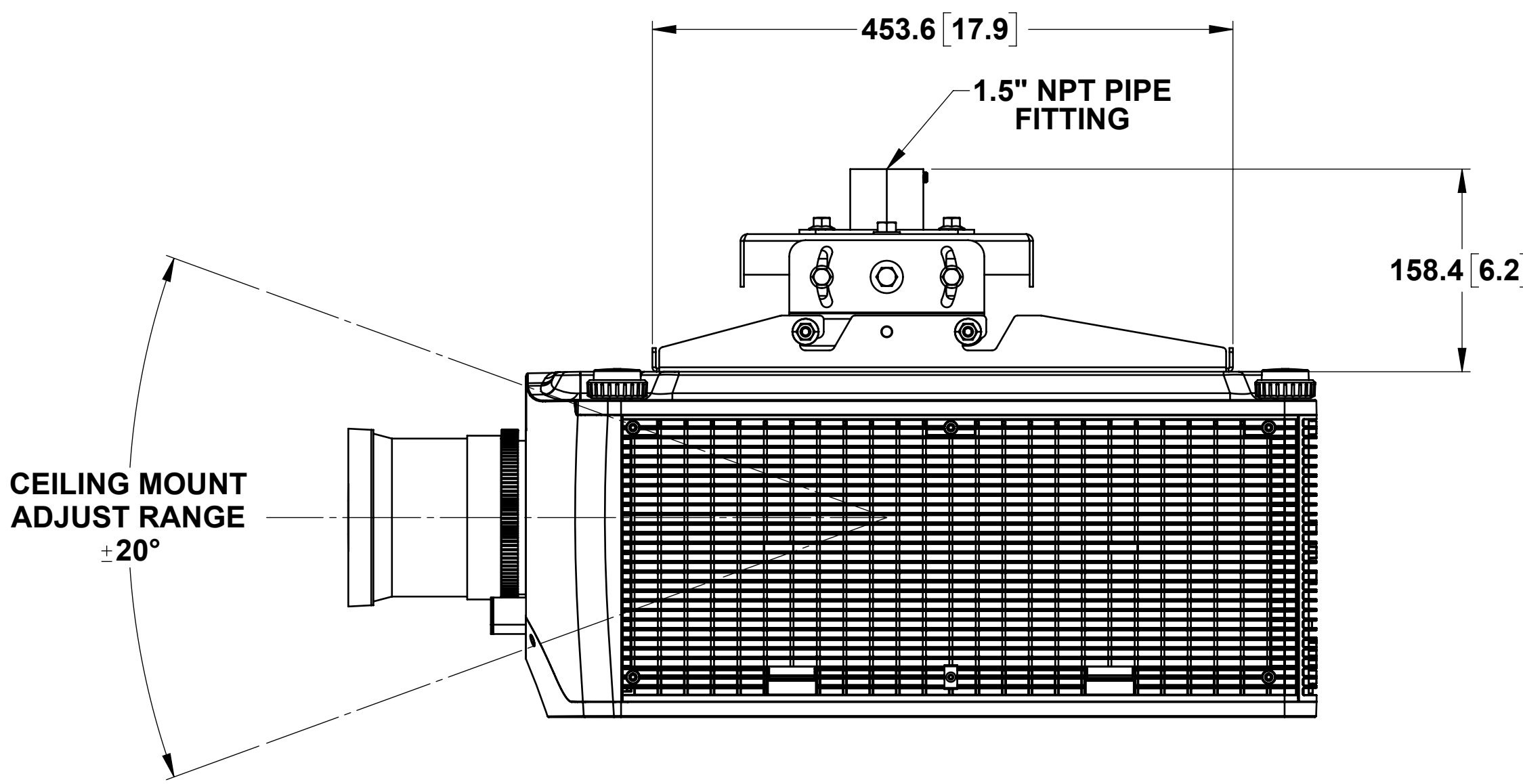
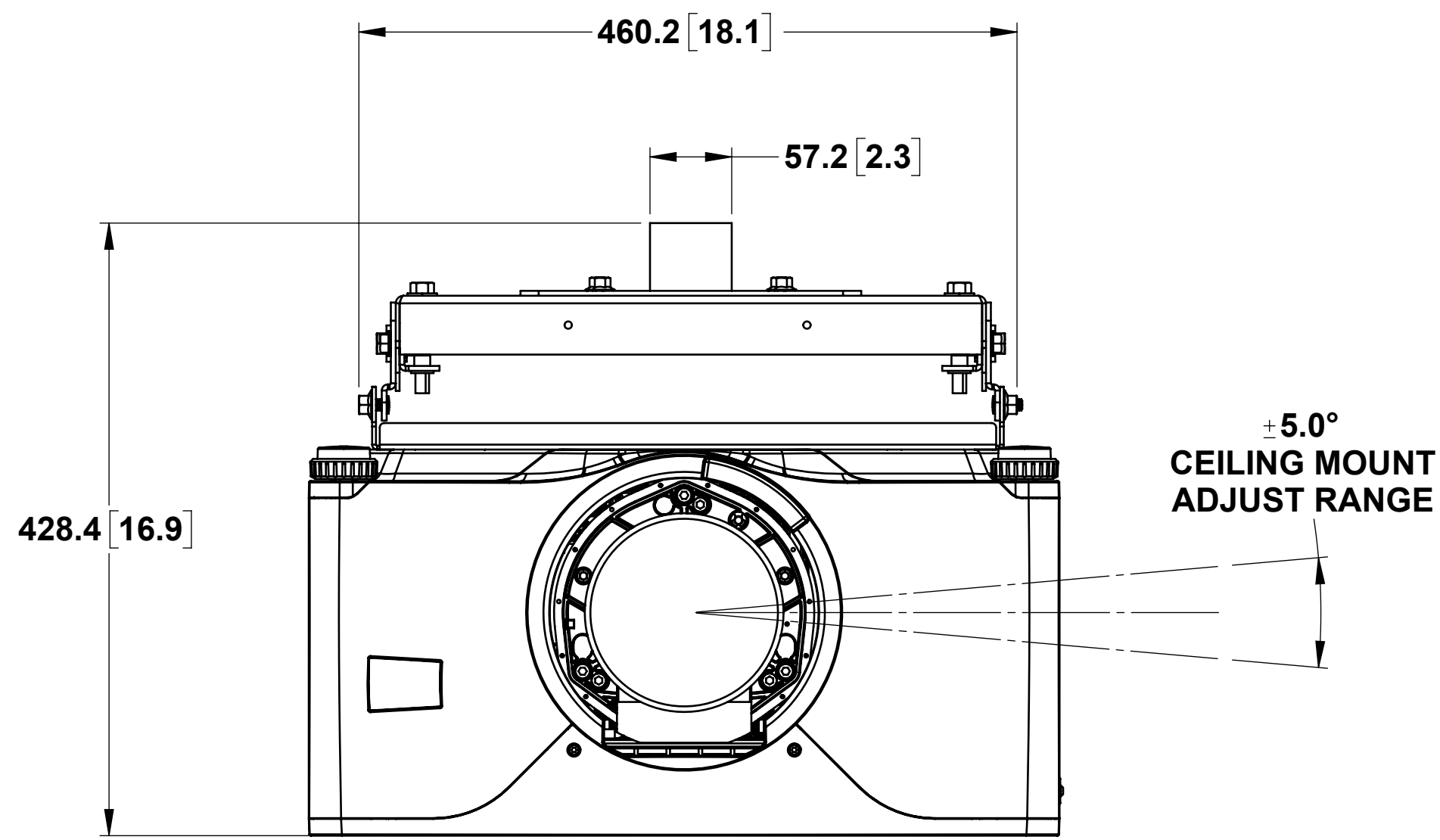
SHEET 3 OF 5



CEILING MOUNT M-SERIES
118-100108-XX



NOTE: REFER TO SHEET #1 FOR MAX TORQUE VALUES
WHEN SECURING PROJECTOR TO CEILING MOUNT



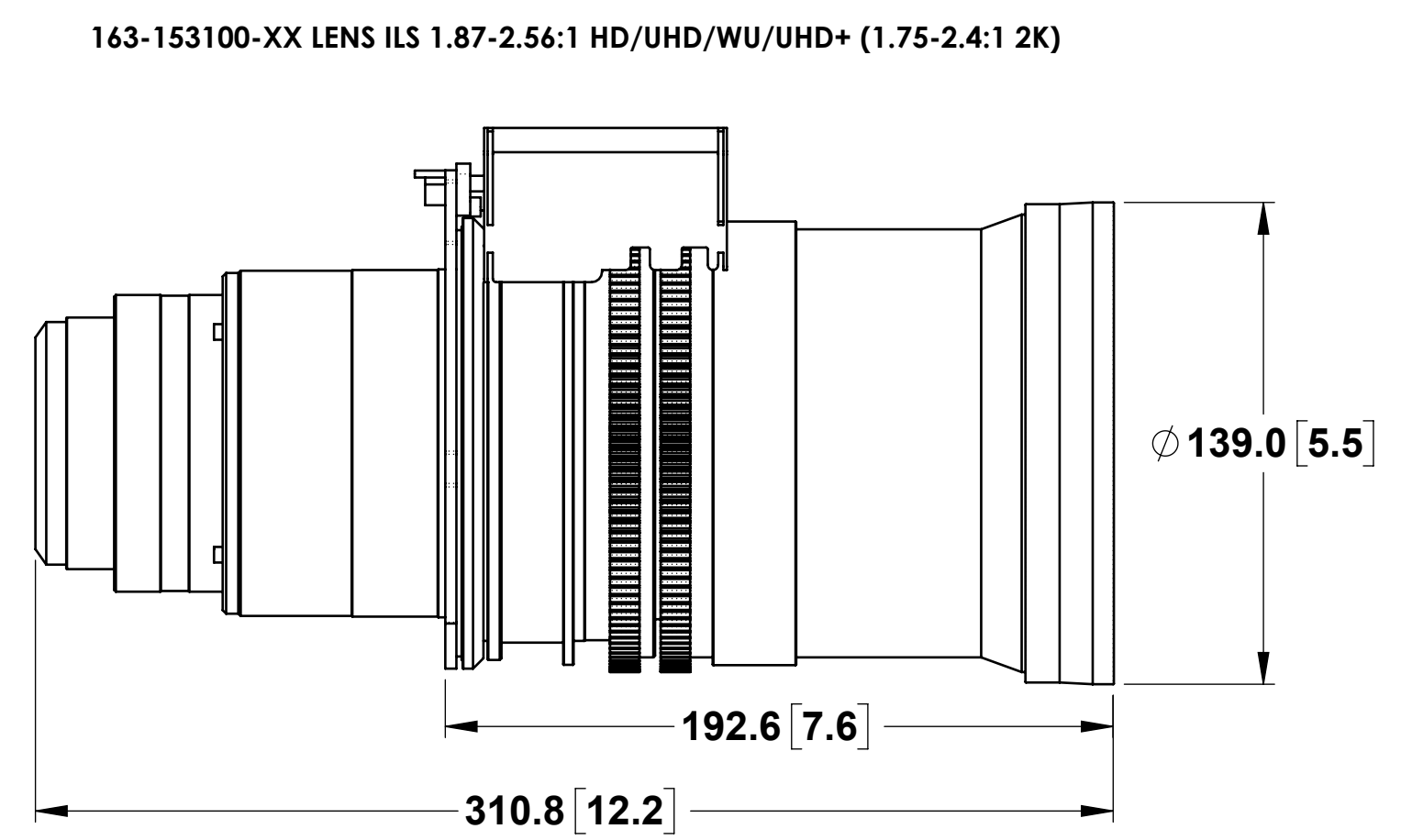
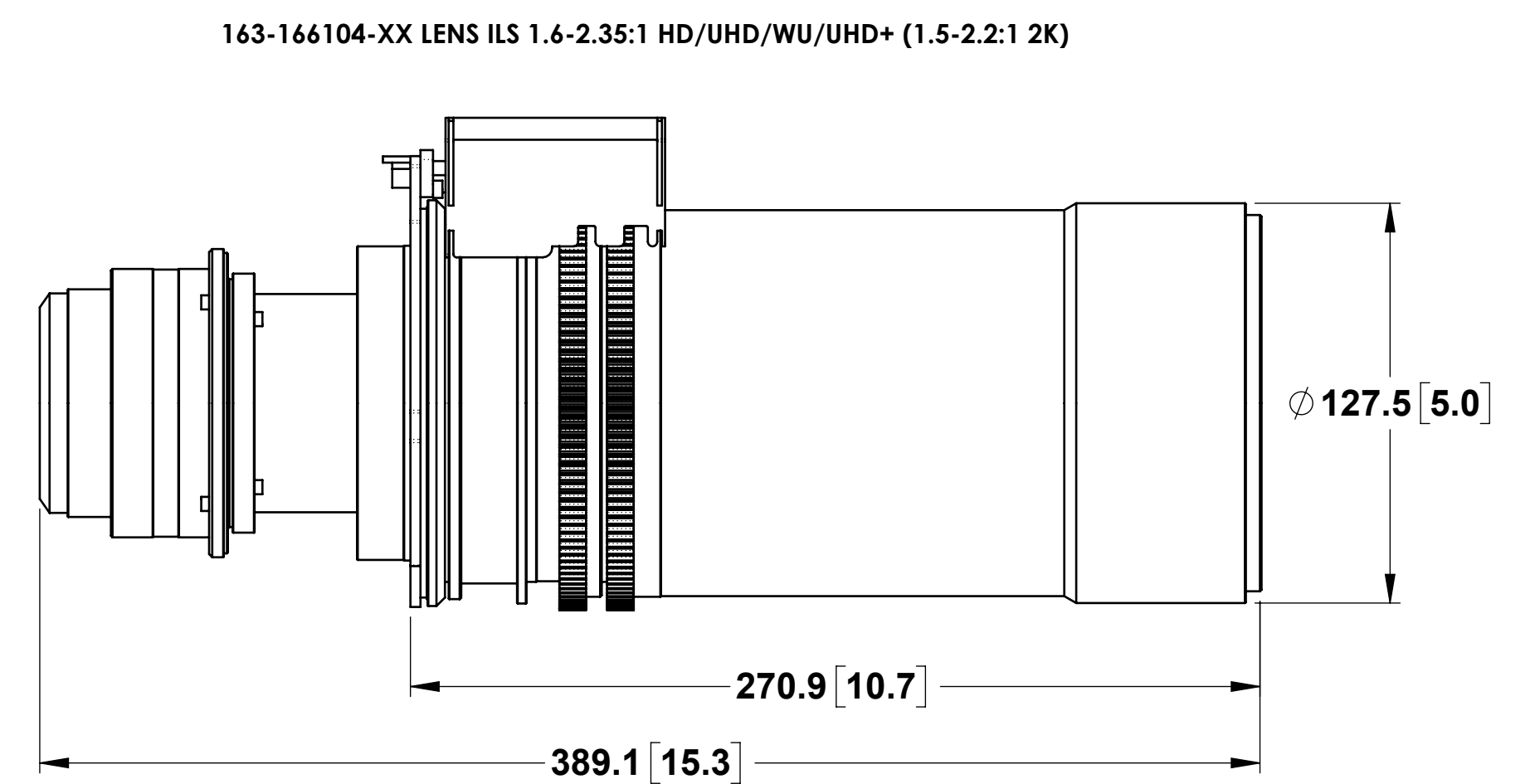
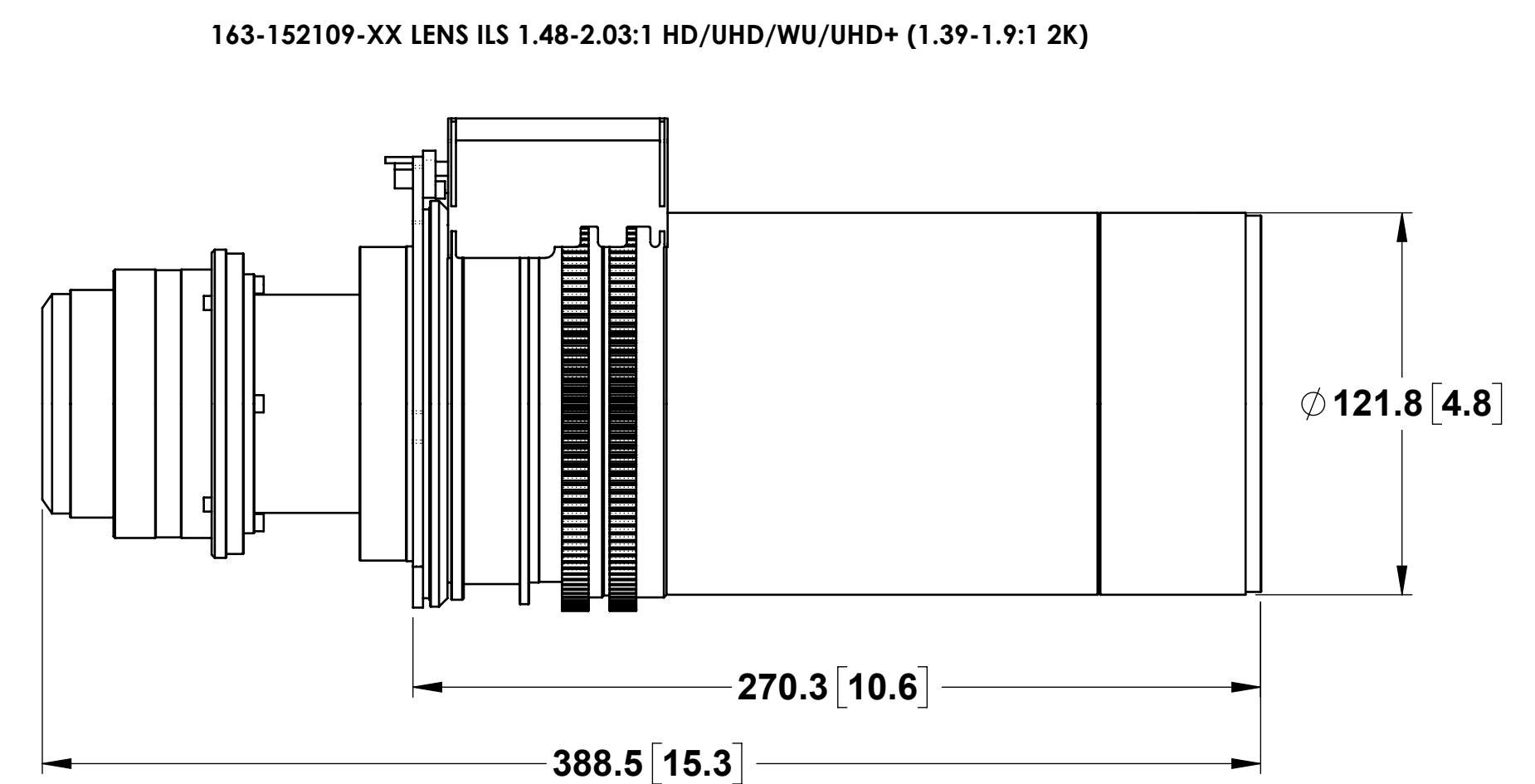
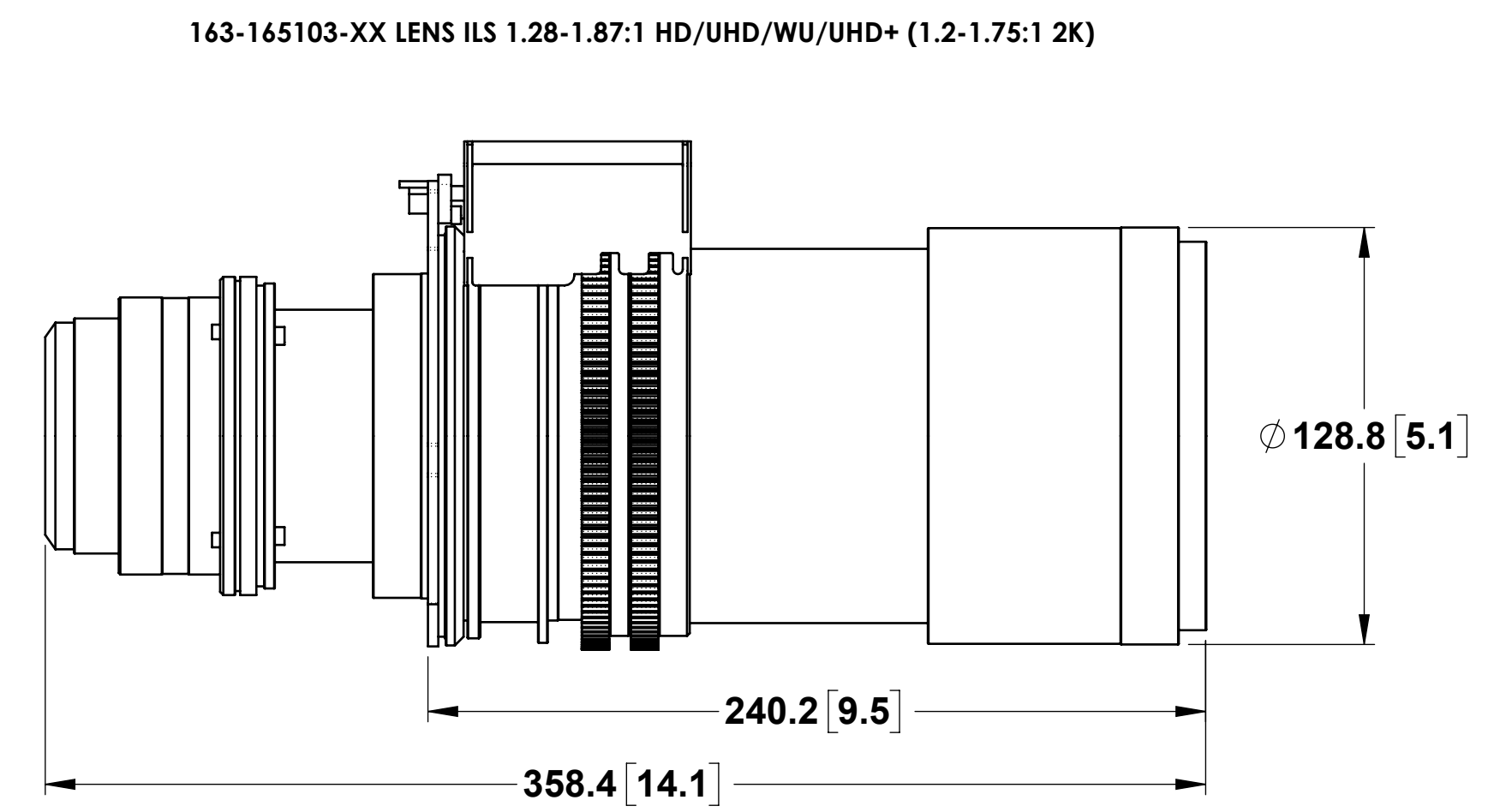
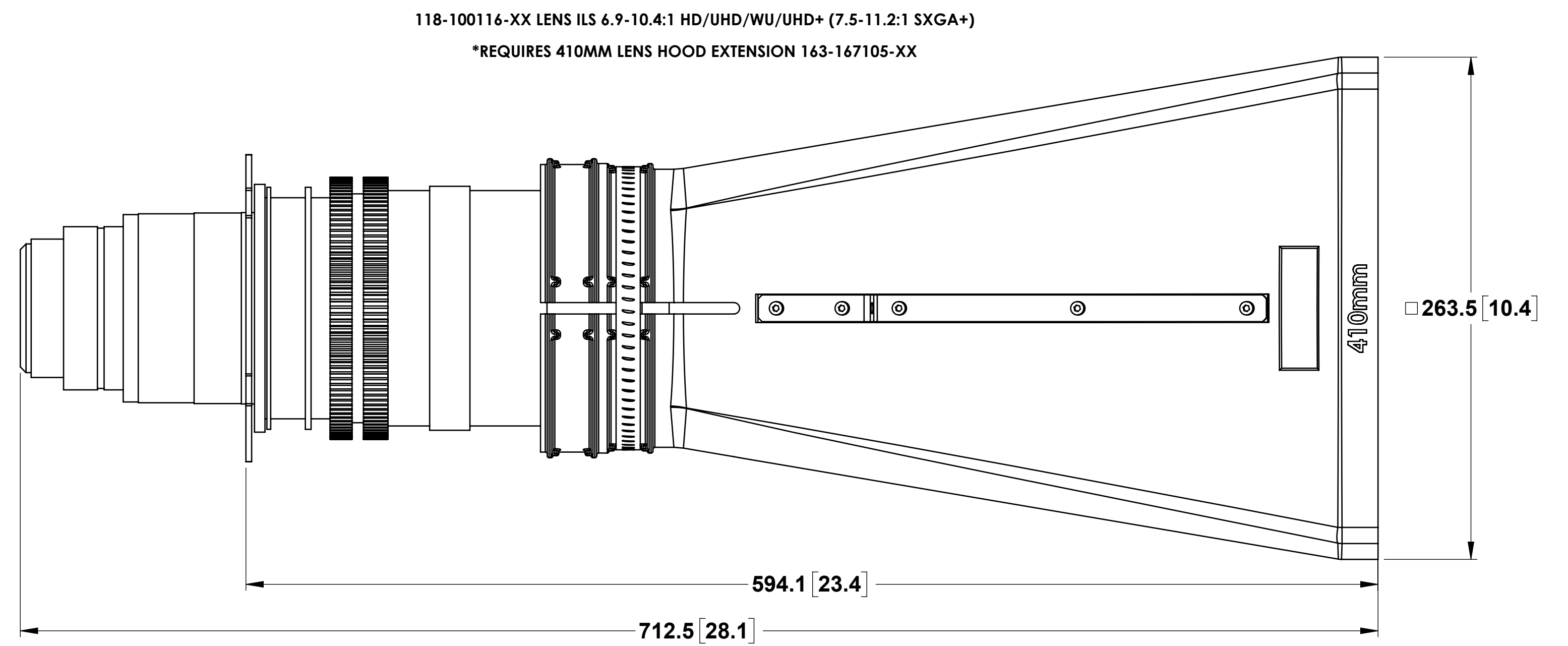
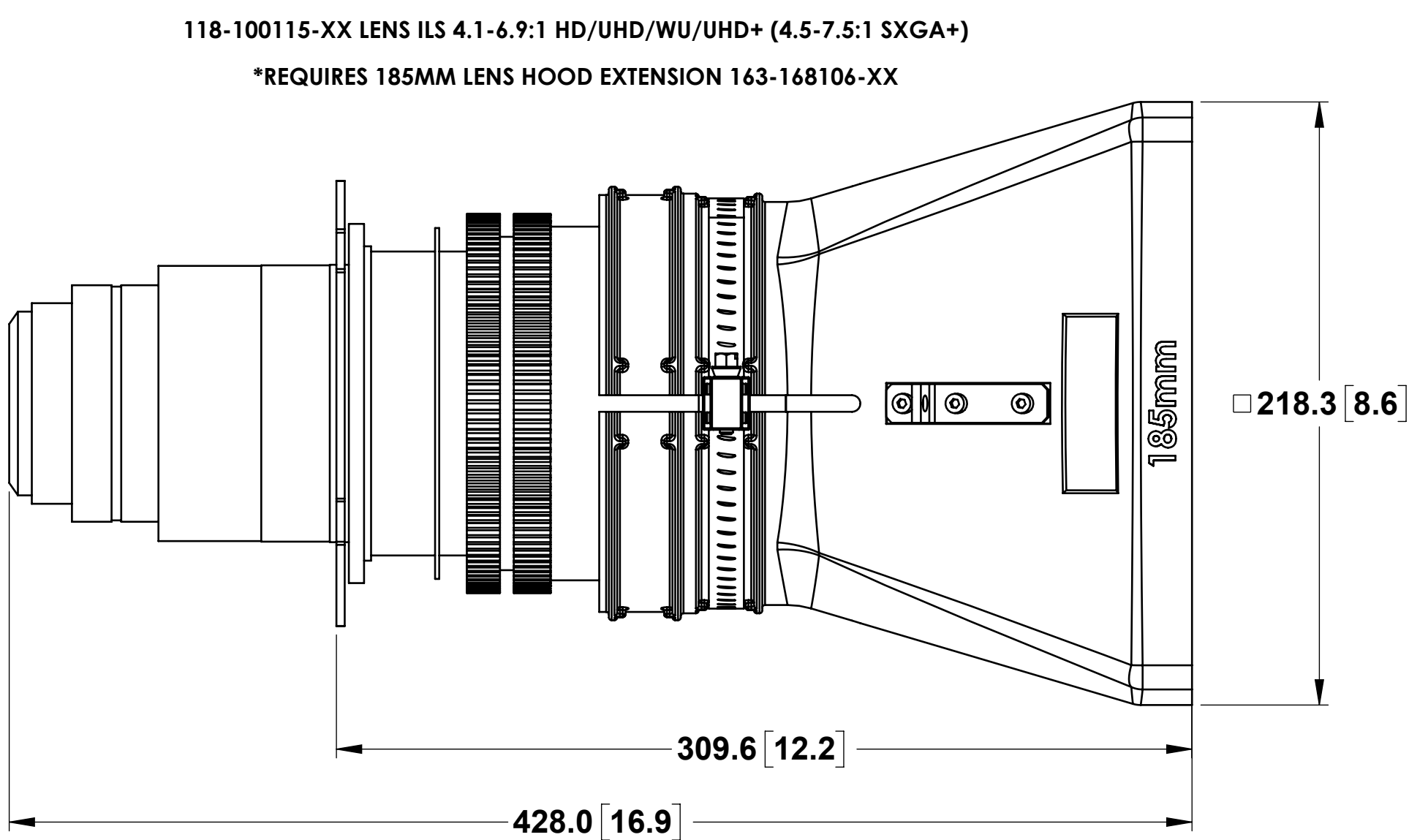
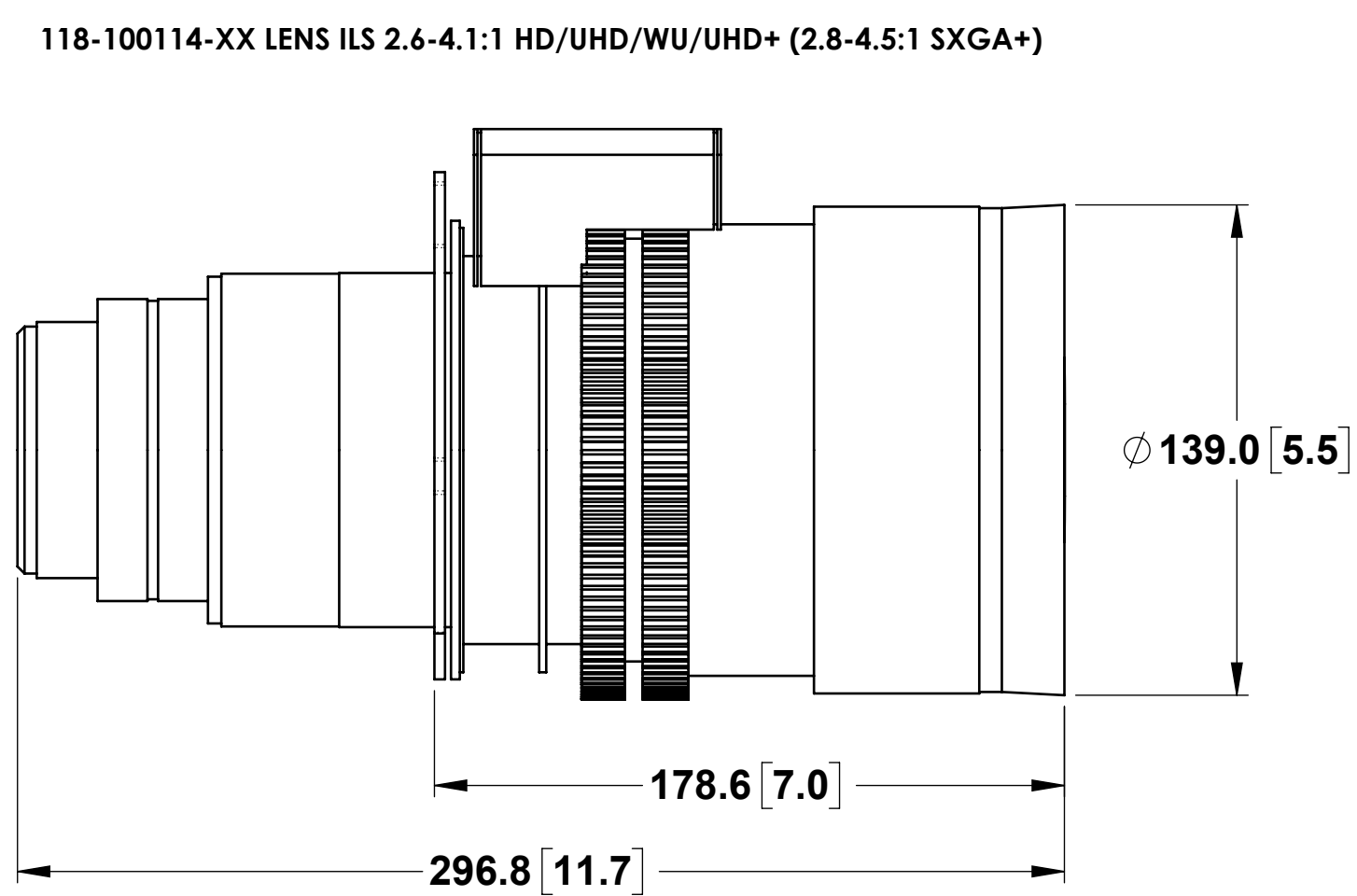
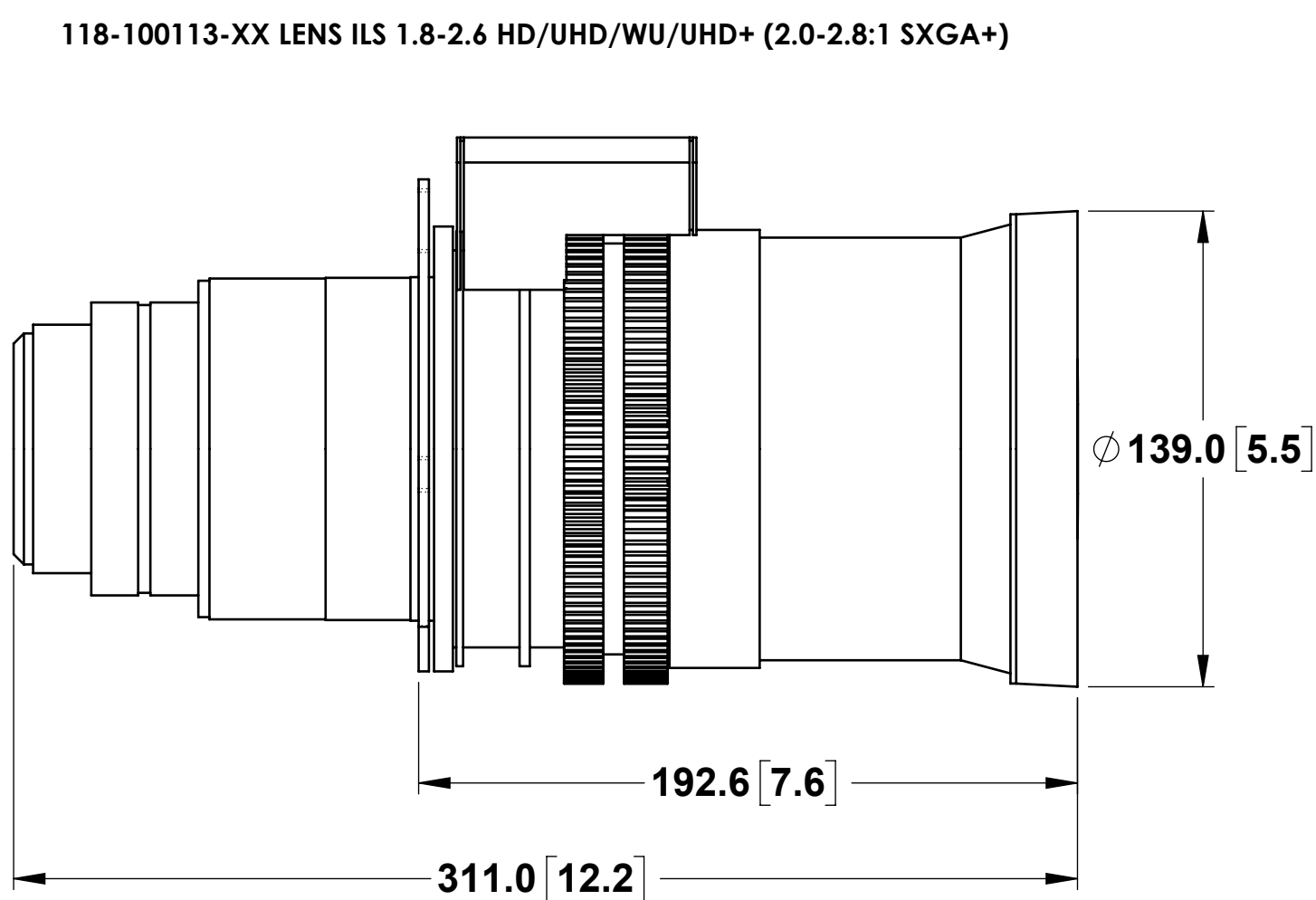
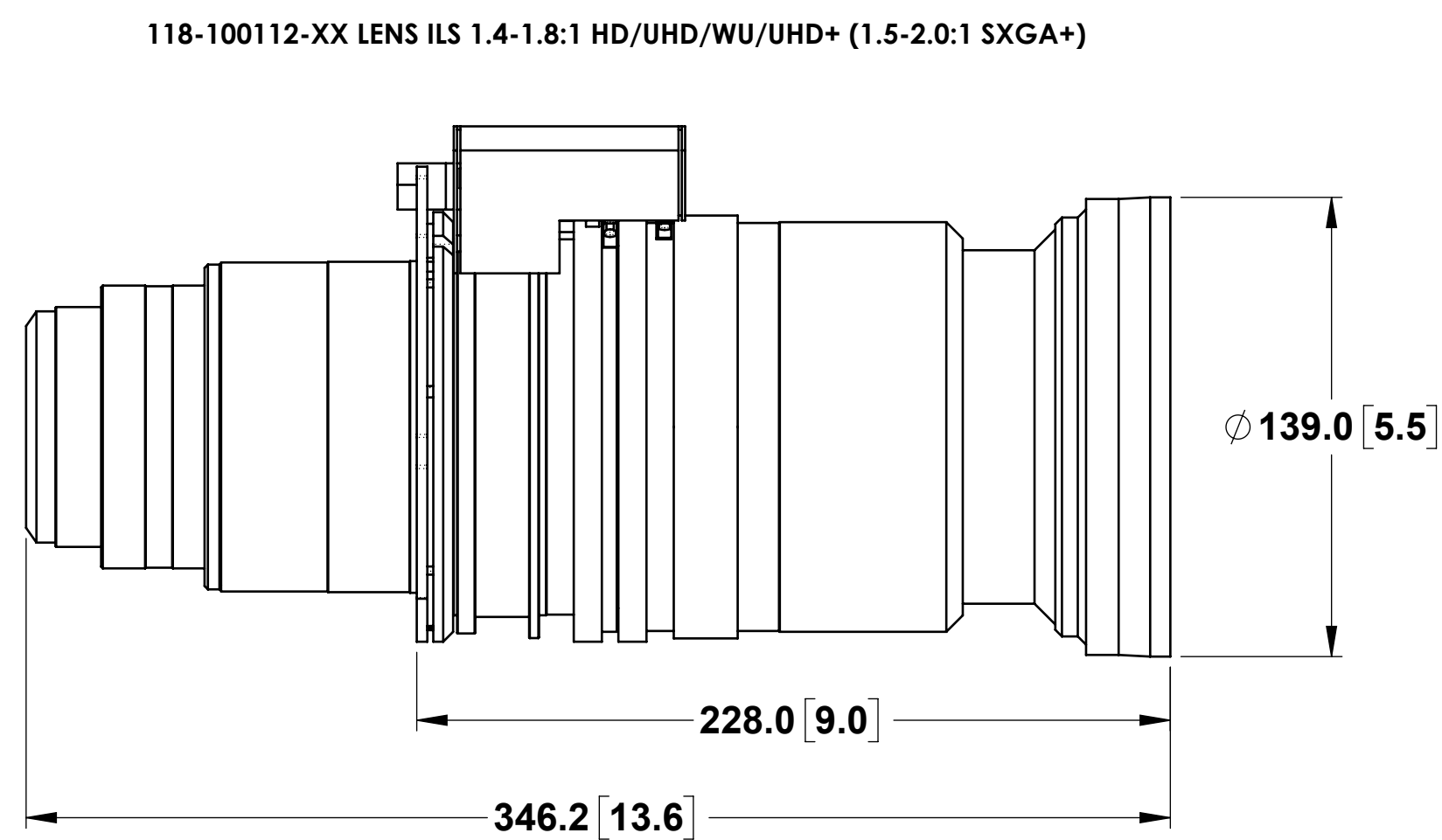
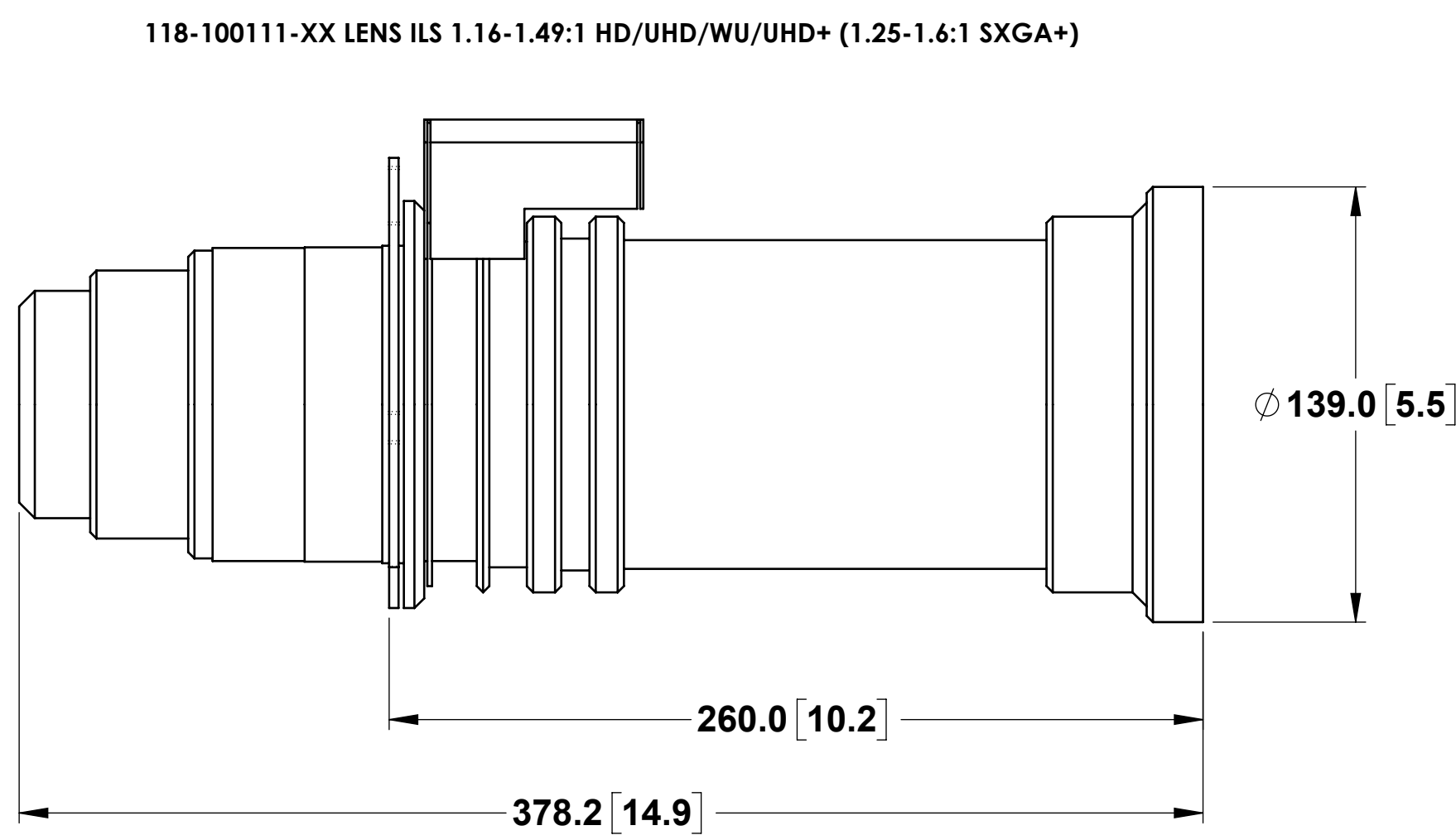
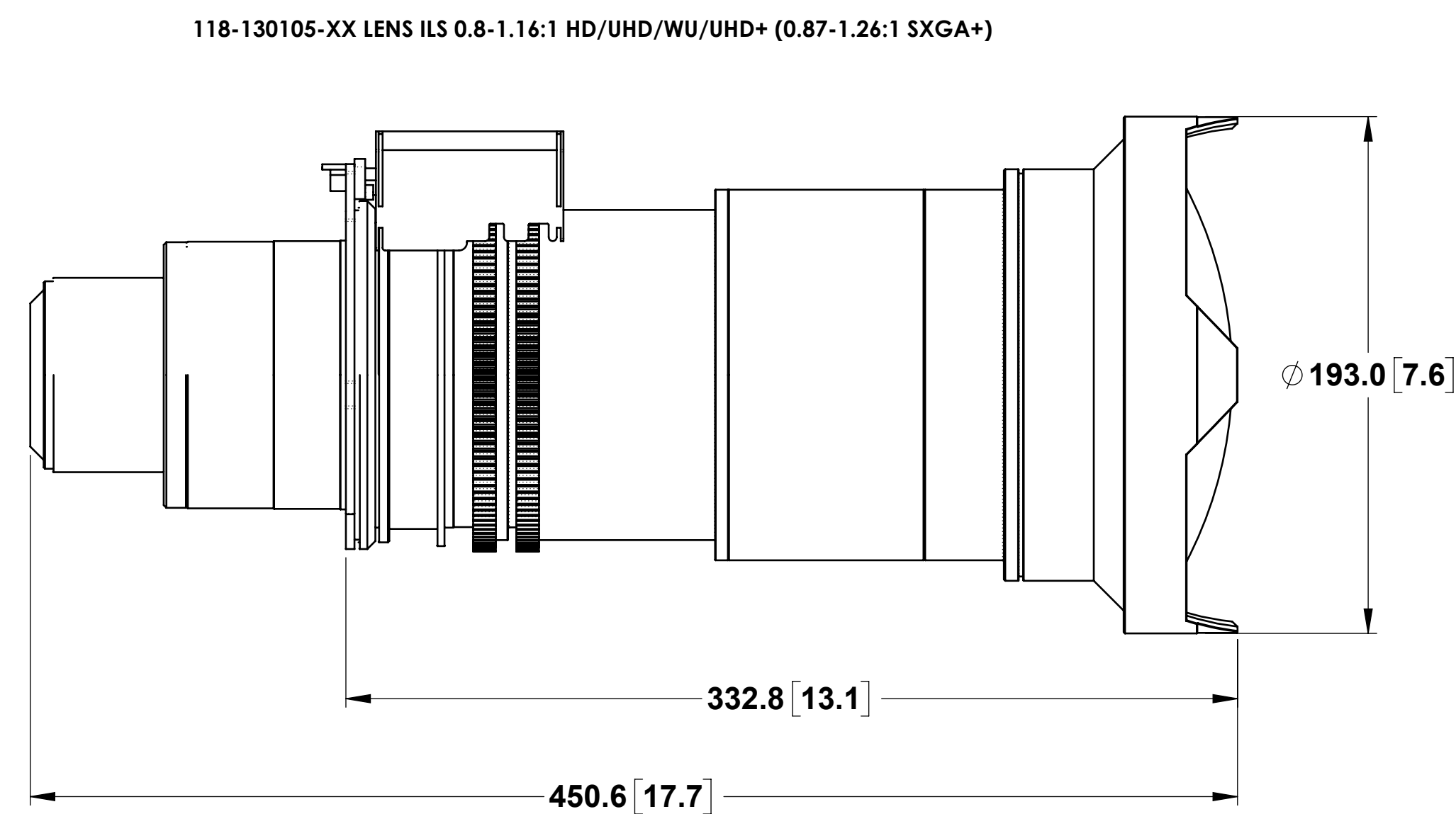
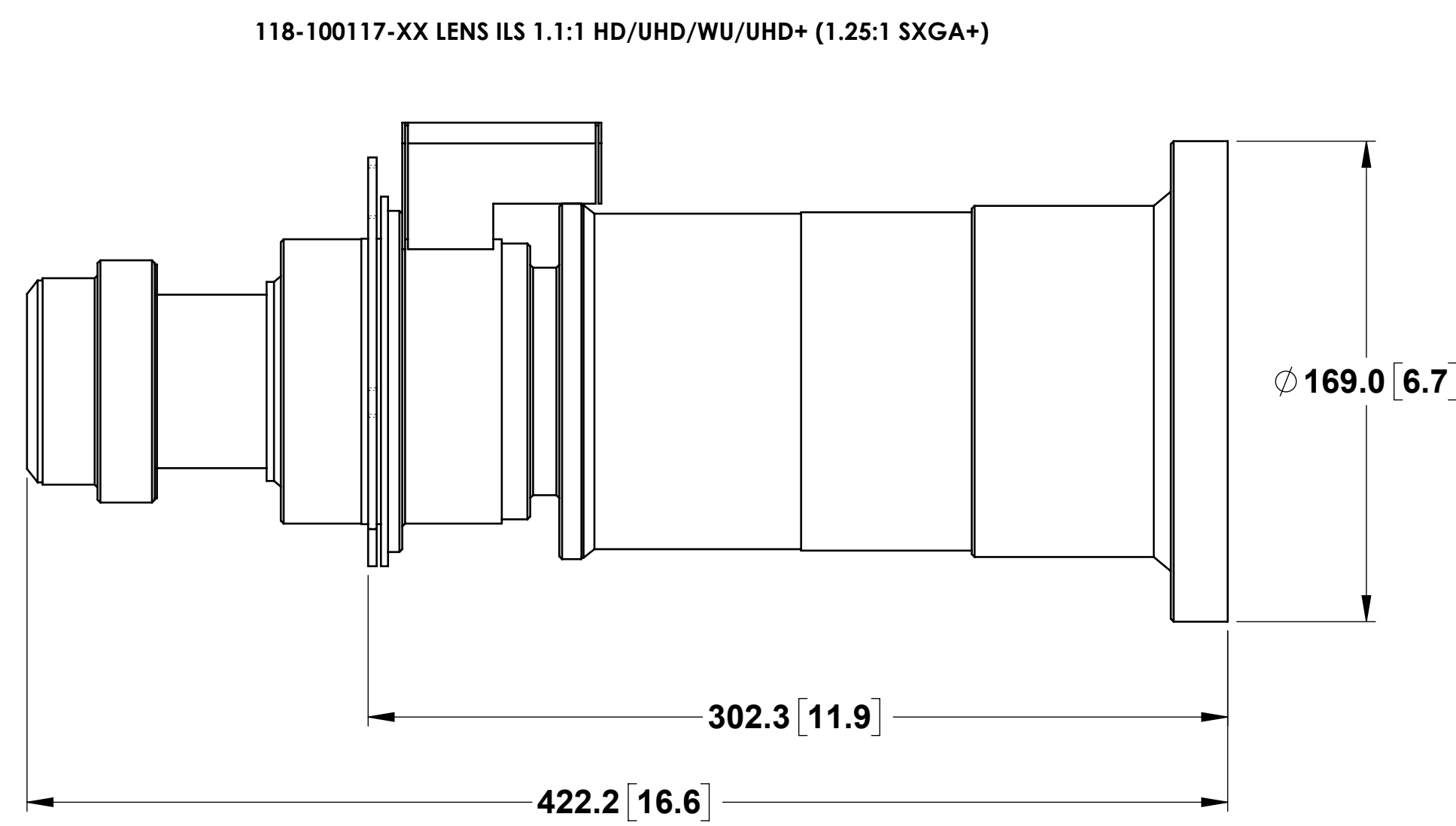
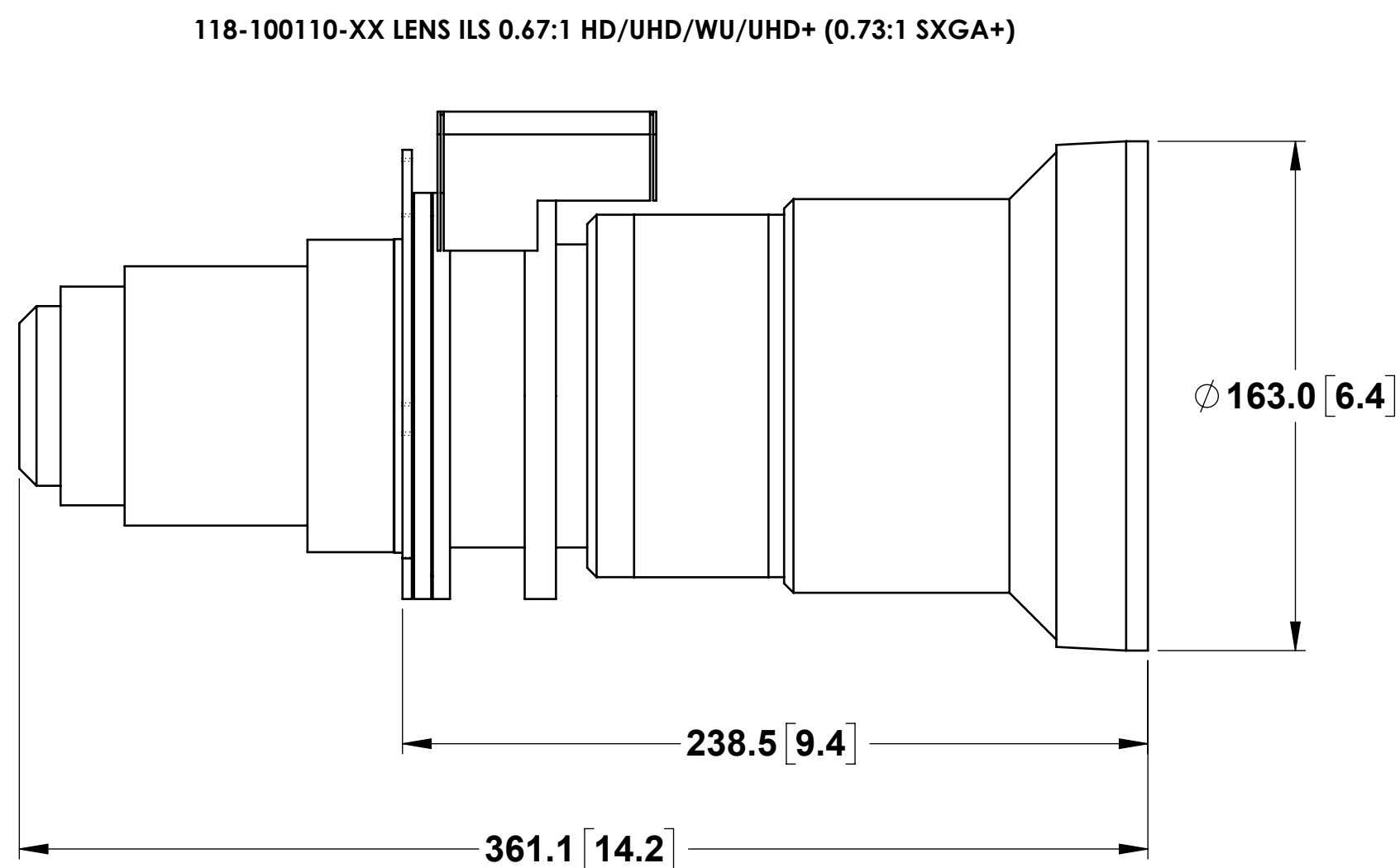
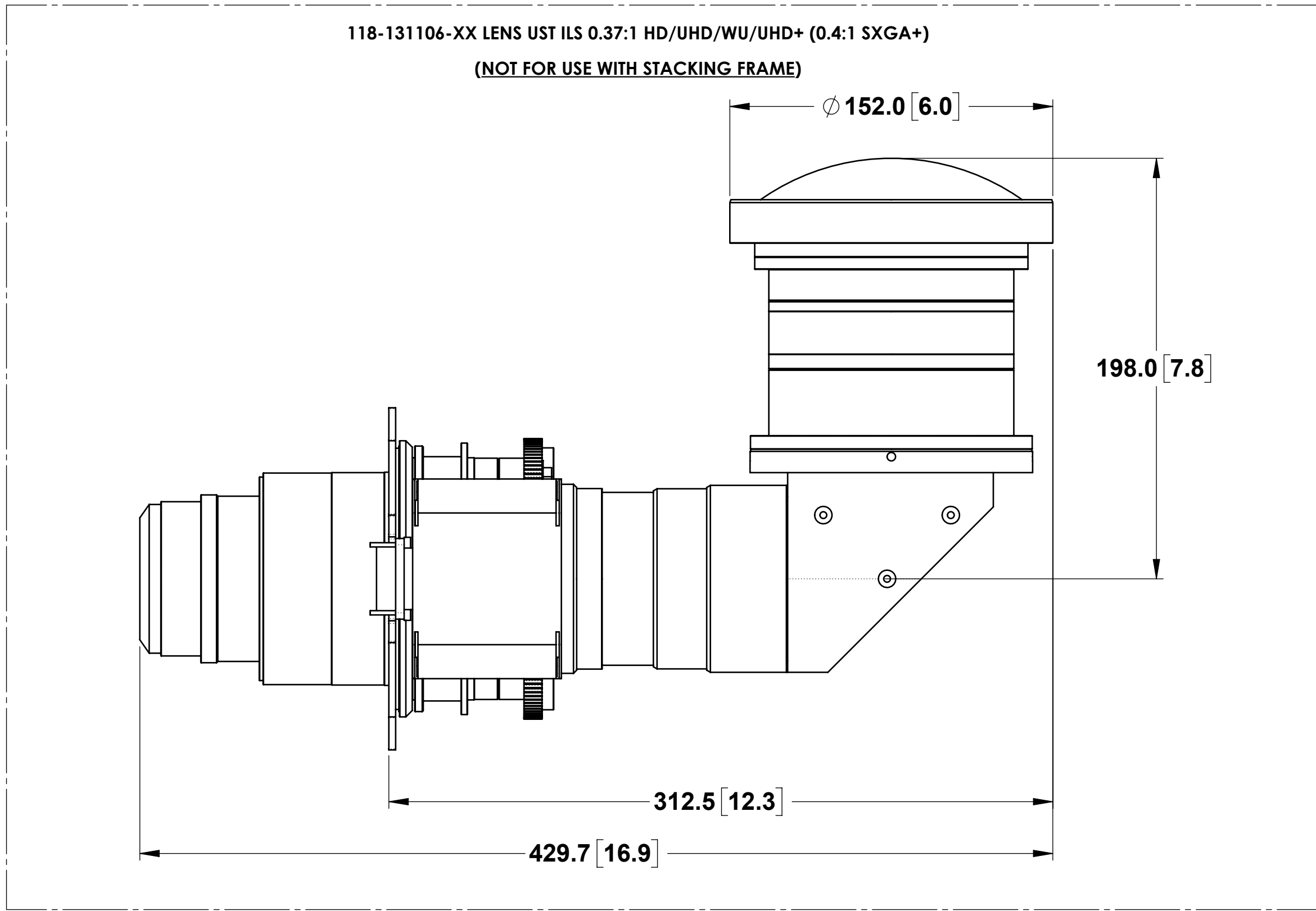
NOT TO BE DISCLOSED OR REPRODUCED IN
ANY MANNER WITHOUT THE EXPRESS WRITTEN
PERMISSION OF CHRESTE DIGITAL SYSTEMS
USA, INC. OR ITS AFFILIATES LISTED ON
www.chrestedigital.com

CHRESTE

DATE PART NUMBER

020-103552-01 02

SCALE 1:4 MASS - LBS [KG] SHEET 4 OF 5



NOT TO BE DISCLOSED OR REPRODUCED IN ANY MANNER WITHOUT THE EXPRESS WRITTEN PERMISSION OF CHIKISTIE DIGITAL SYSTEMS USA, INC. OR ITS AFFILIATES LISTED ON www.chikistie.com

CHIKISTIE®
SCALE: 1:4

DATE: E PART NUMBER: 020-103552-01 02
MASS: - LBS (- KG) SHEET 5 OF 5