



SHARP / NEC

P Series

Ideal for higher education classrooms and corporate conference rooms

P547UL/P627UL

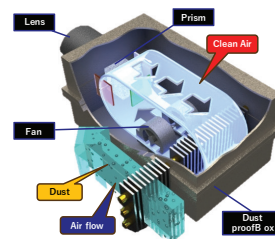


Versatile, maintenance free, quiet entry installation projectors with a reliable laser light source.

Maintenance Free

- Sealed LCD cooling system prevents dust from reaching the optics and eliminates the need for a filter.
- Advanced laser technology delivers a reliable light source up to 20,000 hours

NEC's Unique LCD Panel Cooling Design



Powerful Performance

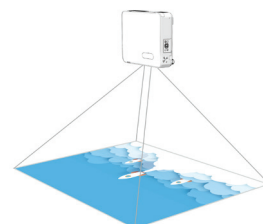
- Lowest audible noise of any projector in this class provides distraction free presentations.
- After startup images appear immediately with breakthrough laser technology
- Brightness adjustment and constant brightness mode maximize laser life and allow for a consistent looking image over an extended period of time
- High performance video processing/scaling supports 4K/30 content



4K UHD
READY

Flexible Installations

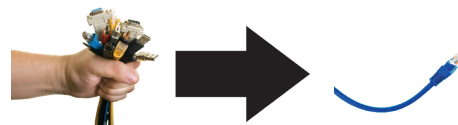
- Lens shift capabilities make alignment easy: (H = +/- 29% / V = 0%~+60%)
- Tilt-free installation capabilities make these projectors ideal for almost any install environment, including floor projection
- Lower the cost of your installation by eliminating the need for costly re-programming of existing control systems. (supports competitors commands call Sharp NEC for complete list)



Floor projection support

Built-In HDBaseT Support

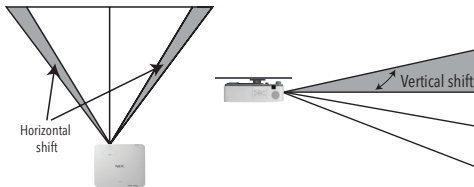
Simplify your installations with HDBaseT. Optimized for video applications and supporting uncompressed full HD digital video, audio, ethernet and various control signals. With only a single cable (up to 100m) to run, infrastructure and labor costs are reduced, installations are significantly easier, and there is no cable clutter to manage. With uncompressed HD video support, images have never been more stunning.



Advanced Installation Features

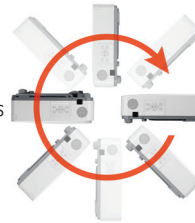
Lens Shift

Lens shift provides greater flexibility when determining install location



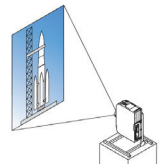
Tilt-free

The projector can be rotated freely (360°) to orient the image depending on the installation requirements



Portrait mode

Allows the projector to be rotated (and screen if necessary) to a vertical alignment so that portrait content can be viewed without black bars on the side when landscape mode is used.



ProAssist

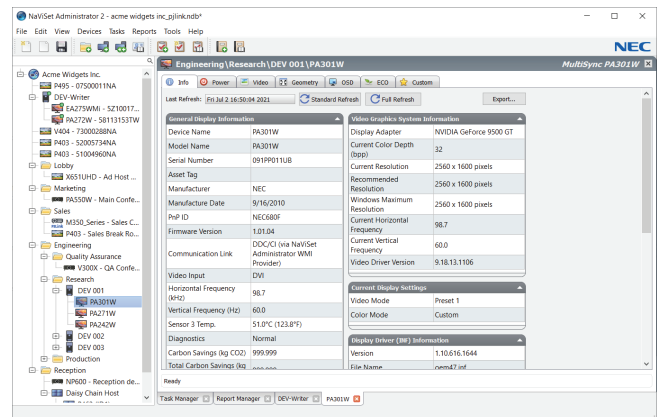
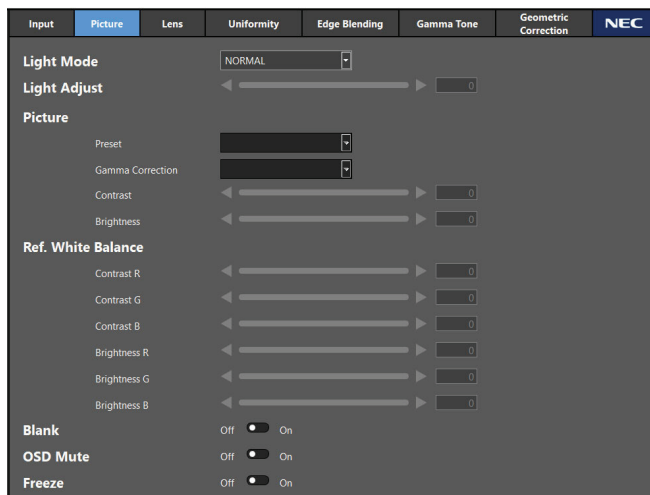
Projector management software for installation professionals provides network based projector control including input switching, picture, and geometric correction.

ProAssist™



NaViSet

This software is an all-in-one remote support solution that runs from a central location and provides monitoring, asset management and control functionality for a majority of NEC display devices and Windows computers. It is ideal for multi-device installations over larger infrastructures.

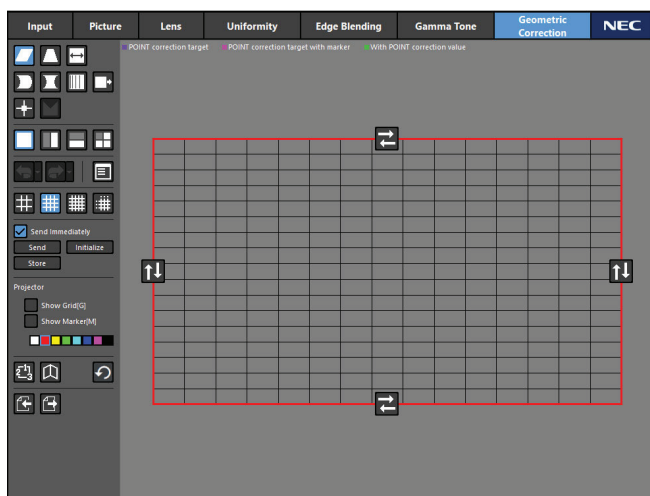
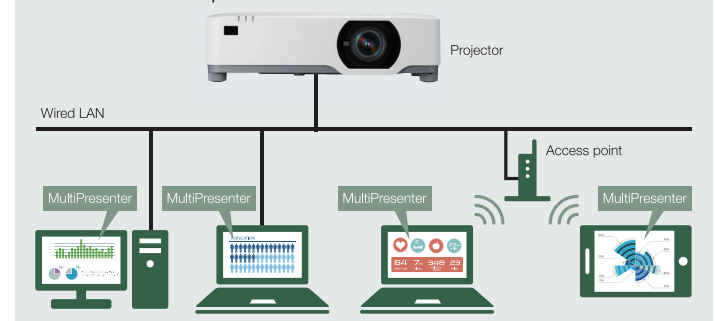


MultiPresenter

MultiPresenter is application software that lets you display your device's screen (PC, tablet, smart phone, etc.) on the receiver projectors via wired or wireless LAN. MultiPresenter is free and available on Windows, Mac, iOS, and Android.

MultiPresenter™

Connection Example



UNIQUE FEATURES

Sealed LCD cooling system eliminates the need for a filter which reduces recurring maintenance requirements and lowers TCO

Broad manual lens shift provides installers with greater flexibility horizontally and vertically when choosing a mounting location and obstructions in the ceiling are a concern

Whisper quiet operation minimizes any distraction created from the sound of the projector in applications where the audience would be sensitive to external noise

Built-in 20W speaker can potentially save users from needing a separate audio system in smaller rooms

Included 2.0A USB power allows for low-voltage 3rd party devices to be powered directly from the projector eliminating the need for additional electrical outlets in the ceiling

WARRANTY

Registered owners receive a five (5) years or 20,000 hours (whichever comes first) parts and labor warranty including InstaCare next business day exchange.

SHIPS WITH

Remote control, batteries, power cord, lens cap, quick start guide

ACCESSORIES

PA600CM	Ceiling mount
NP05LM1	Wireless LAN Module
RMT-PJ39	Replacement remote control
PWRCRD-PJPX	Power cable

ORDERING MODEL NUMBERS

NP-P547UL
NP-P627UL



		NP-P547UL	NP-P627UL
Display Technology		0.64" LCD	0.64" LCD
Light Output (lumens)	Center	5,700	6,500
	ECO mode OFF	5,400	6,200
	ECO mode	Approximately 60%	
	Long Life	Approximately 65%	Approximately 80%
	Constant Brightness	50%-70%	
Resolution	Native	WUXGA 1920 x 1200	
	Maximum	Up to 4K UHD@30Hz (HDMI/HDBaseT), WUXGA (1920x1200) Analog RGB	
Contrast Ratio (up to)		3,000,000:1	
Laser Life (50%)	ECO mode OFF	20,000 hours	
Screen Size (diagonal)		30 - 300 in. / 0.76 - 7.62m	
Projection Distance		2.6 to 42.3 ft. / 0.8 to 12.9m	
Projection Angle		0 - 10.7° tele / 0 - 17.1° wide (at 100")	
Lens	Zoom	Manual	
	Zoom Ratio	1.6x	
	Throw Ratio	1.23 - 2.0:1	
	Focus	Manual	
	Shift	Manual (H = +/- 29% / V = -0%~+60%)	
	F-number, focal length	F:1.5~2.1 / f=17.2~27.7mm	
Keystone Correction		Manual (+/- 30° horizontal/vertical)	
Synchronization Range	Horizontal	15-100kHz (RGB: 24kHz or over)	
	Vertical	15-120Hz	
SD/HD Video Signal Compatibility		480i, 480p, 576i, 576p, 720p, 1080i, 1080p, 4K UHD	
PC Signal Compatibility		VGA, SVGA, XGA, WXGA, SXGA, WUXGA	
Macintosh Compatibility		Yes	
Input Terminals	RGB1 (analog)	VGA 15-pin D-sub	
	RGB2 (digital)	HDMI w/ HDCP (v1.4)	
	RGB3 (digital)	HDMI w/ HDCP (v1.4)	
	RGB4 (digital)	HDBaseT w/ HDCP (v1.4)	
	Audio In	Stereo Mini Jack	
Output Terminals	Audio Out	Stereo Mini Jack	
Wired LAN port		RJ45 (100Base-TX/10Base-T)	
USB	Type A	Wireless LAN (optional), Memory, (2.0A)	
	Type B	Service	
External Control		RS-232 (D-Sub 9pin), IR, LAN, HDBaseT	
Built-in Speaker		20W	
Power Requirements		100-240V AC, 50/60 Hz	
Input Current		5.1-2.1A	
Power Consumption	ECO mode OFF	303W	328W
	ECO mode	222W	239W
	Long Life	234W	287W
	Standby (network)	2.0W or less	
	Standby (normal)	0.3W or less	
Installation Orientation		Floor/Front, Floor/Rear, Ceiling/Front, Ceiling/Rear	
Product Dimensions (WxHxD)		18.9 x 5.6 x 16.0 in. (480 x 142.5 x 407 mm)	
Net Weight		20.7 lbs. (9.4 kg)	
Shipping Dimensions (WxHxD)		23.3 x 10.2 x 19.3 in. (591 x 259 x 491 mm)	
Gross Weight		27.6 lbs. (12.5 kg)	
Fan Noise		26dB (ECO mode Off), 22dB (ECO mode)	27dB (ECO mode Off), 22dB (ECO mode)
Regulations		USA: UL (UL60950-1/UL62368-1) FCC Part15 Class B, Canada: CAN/CSA (62368-1-14) ICES-003 Issue 7	
Operating Temperature		32-104°F / 0-40°C	
Storage		14-122°F / -10-50°C	
Humidity		20 to 80% Humidity (Non-Condensing)	

Additional accessories are available, including screens, carts, mount accessories and replacement cables. Visit www.sharpeddisplays.us for details.



Extron

AMX



HDMI, the HDMI Logo and High-Definition Multimedia Interface are trademarks or registered trademarks of HDMI Licensing LLC. HDBaseT™ and the HDBaseT Alliance logo are trademarks of the HDBaseT Alliance. All other brand or product names are trademarks or registered trademarks of their respective holders. Product specifications subject to change.

©2022 Sharp NEC Display Solutions of America, Inc. | All rights reserved.

Rev 09.13.22

Sharp NEC Display Solutions of America
www.sharpeddisplays.us